



Masters in the Priceless Art of Excellence

The spirit of Jabel encompasses artists, craftsmen, even engineers, working together as Masters in the Priceless Art of Excellence.

Jabel is dedicated to creating the finest quality possible, utilizing various steps and processes that are slower and more costly, but for which there is no substitute in the production of fine quality pieces.

Since 1916, Jabel has been creating fine jewelry for individuals who recognize and appreciate fine quality. We utilize 18K gold and platinum and fine diamonds in our pieces. The pages that follow represent a limited sample of our products. Ask your jeweler about the pieces that most appeal to you.

Jabel Remounts

Your diamonds and precious gems can be reset into a beautiful new creation, hand-crafted especially for you by Jabel's designers and artisans. We can work from an existing piece of jewelry or from an image in your mind's eye. A full-color artist's rendering will be presented to you for approval before we begin to shape gold or platinum.



Table of Contents

	Page
Reference Page	4
Introduction	5
Jabel Heads	6
Jabel Method	7
FancyRings	8
Diamond Ensembles	10
<i>Diamond Engagement Rings</i>	
<i>Matching Wedding Rings</i>	
Solitaires	13
<i>Solitaire Sets</i>	
Seamless Wedding Rings	16
Carved Wedding Rings	18
Diamond Wedding Rings	19
Three Stone Diamond Rings	20
Diamond Anniversary Rings	21
Restyle/Remount, Special Orders	22
<i>Remount Engagement Sets</i>	
<i>Remount Fancy Rings</i>	
<i>Remount Pendants</i>	
JabelColor Jewelry	24
<i>Colored Stone Bracelets</i>	
<i>Colored Stone Rings</i>	
<i>Colored Stone and Diamond Anniversary Rings</i>	
<i>Colored Stone and Diamond Earrings</i>	
<i>Colored Stone and Diamond Pendants</i>	
<i>Colored Stone and Diamond Rings</i>	
<i>Colored Stone and Diamond Wedding Rings</i>	
Men's Rings	29
Pendants & Earrings	30
<i>Crosses</i>	
<i>Earring Jackets</i>	
<i>Necklaces</i>	
Diamond Slides	34
<i>AN's</i>	
<i>Chains</i>	
Bracelets	37
<i>Add-A-Section Bracelets</i>	
<i>Complete Bracelets</i>	
<i>Bangle Bracelets</i>	
Catalog Index	45

Reference Page

We are always happy to accommodate an order tailored to your specifications. This page should help you with the ordering process. Prices are shown in the accompanying Price Book.

How to order -

Please include the following information with your order.

- Account number
- Prefix and base style #
- Head style
- Carat size
- Diamond quality
- Metal
- Desired delivery date
- Purchase order #
- Finger size if applicable

Please, remember to give us your store name.

Metals

Jabel jewelry is available in the following metals.

18k white gold	14k pink gold
18k yellow gold	14k green gold
Platinum	

Jabel 18K white gold is alloyed with palladium.

- If you order yellow or white jewelry, the major diamonds and melee are mounted in 18K white gold unless otherwise noted.
- "ALL YELLOW" indicates melee only are to be set in yellow gold.
- Major stones that are to be set in yellow gold must be specifically requested.

Style Numbers

Each style number in the catalogue and price book has a prefix. The **prefixes** have the following meaning.

BL - Blank, accommodations for stones, no stones provided.
DC - Diamond complete, item priced complete with diamonds or colored stones.
NS - No stones, original design has no provisions for stones.
SW - Seamless wedding ring
DM - Diamond mounting
CW - Carved wedding ring
CD - Color and diamond
CO - Color only

Jabel Services

Remount & Special Orders - Jewelry in our catalogue may be utilized for your special needs. (see page 22)

Jabel Stone Buyers' - sources make it possible for you to offer extraordinary gems to your customers.

Advertising & Promotional Material - Ads, digital color images of Jabel jewelry, postcards, booklets, any special promotional request, these are all available to our customers. Please call.

Introduction



We at Jabel have been manufacturing fine jewelry since 1916 and we are very good at it - the BEST. Our mission, the reason for our existence, is to create the finest possible jewelry and to help you satisfy the wants and needs of your customers. Our salesmen visit with you to inform you and your staff about Jabel products and services, to show you samples of what we are currently manufacturing and to help you decide what inventory of Jabel merchandise you need to successfully sell Jabel to your customers.

WHY THIS CATALOGUE? Your Jabel representative cannot be in your store 365 days a year, but your Jabel catalogue can be. It is a reference and a resource you have at your fingertips. The catalogue offers a host of ideas and choices for you to add to your saleable inventory. This catalogue is also designed to be an aid for you when working directly with your customer. You need to have in stock a representation of our line - surely not our entire line. Using this catalogue along with the Jabel merchandise you do have in stock, you can give your customer almost unlimited choices of additional Jabel merchandise.

THE MOST SUCCESSFUL JABEL CUSTOMERS TAKE ADVANTAGE OF US. This catalog can help you do just that. They realize that we have a large variety of die-struck heads available for our pieces. Our most successful customers understand that a shank shown on one particular ring can be applied to heads or a top illustrated on another style number. Our most successful customers know that a ring or add-a-cluster piece can be transformed into a pendant or earrings. WE ARE DIFFERENT BECAUSE WE MANUFACTURE OUR OWN JEWELRY AND BECAUSE WE MANUFACTURE THE SHANKS, THE SETTINGS AND THE PARTS THAT MAKE UP OUR JEWELRY.

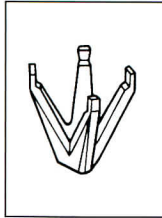
This catalogue places our talented jewelers in your store. Look through the catalogue and keep your mind and imagination open. Don't be concerned about style numbers. Call us with your ideas. Tell us what you are looking at in the catalogue and how you want to use it. Please take advantage of our Special Order and Remount Department. Even if you have only a general idea of what you need, call us and give us the opportunity of working with you. We love to sell our standard pieces right out of the book, but we especially enjoy creating pieces for your special and specific needs.

The catalogue is organized by product category. Refer to the Table of Contents. There are reference pages illustrating the Jabel Method, Die-Striking, and our wide variety of die-struck heads. The Price Book located within the catalog is organized for your ease and convenience. Every product page is reproduced in the price book with the relevant and necessary information next to the page.

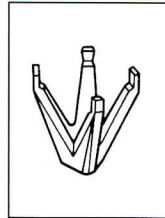
Use this catalogue. Take advantage of us. Allow us to serve you and demonstrate why we are "Masters in the Priceless Art of Excellence".

J a b e l H e a d s

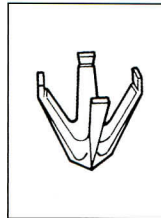
Here are the most sought after jewelry heads that you can purchase for your precious diamonds and gems. These die-struck settings are beautiful and they hold your stones safely and firmly



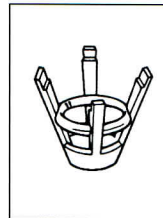
JSN
1/5 to 2-1/4 ct.
3.9 to 8.5 mm



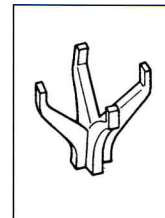
JLS
2-1/2 to 3-1/2 ct.
9 to 10 mm



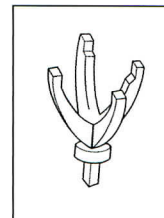
JS
1/5 to 2-1/4 ct.
3.5 to 8.5 mm



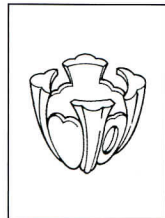
JM
1/4 to 2-1/2 ct.
4 to 9 mm



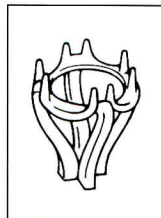
JSD
1/4 to 2 ct.
4 to 8 mm



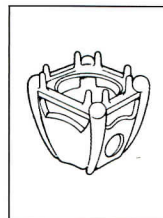
KT
1/6 to 2-1/2 ct.
3.5 to 9 mm



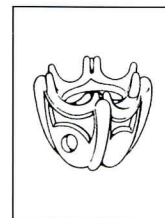
K
1/4 to 1 ct.
4 to 6.5 mm



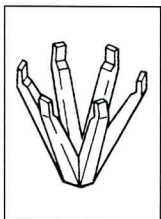
NRF
1/8 to 1-1/4 ct.
2.8 to 7 mm



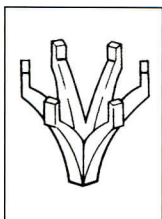
JL
1/8 to 1 ct.
2.8 to 6.5 mm



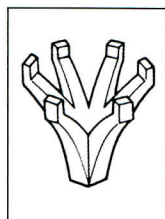
JRF
1/8 to 1-1/4 ct.
2.8 to 7 mm



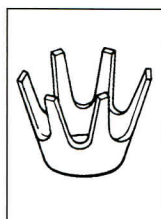
JTO
1/5 to 2-1/4 ct.
3.9 to 8.5 mm



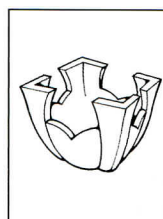
JTB
1/5 to 2 ct.
3.9 to 8 mm



JLT
2-1/4 to 5 ct.
8.5 to 10 mm



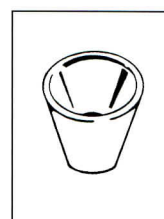
JTJ
.05 to 1 ct.
2.4 to 6.5 mm



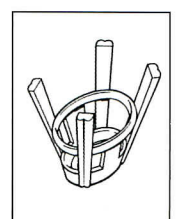
FPC
3 to 8 mm



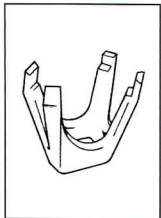
EB
1/4 to 2 ct.



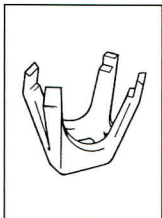
STB
1/4 to 2-1/2 ct.



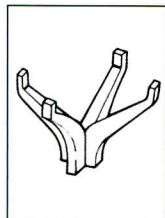
JHO
For colored stones
6 x 4 to
14 x 12 mm



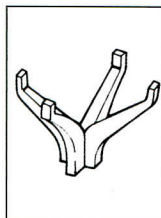
EJS
1/2 to 2 ct.



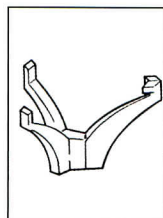
OJS
3/8 to 3 ct.



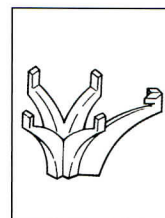
EJSD
1/2 to 2 ct.



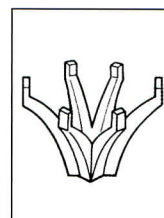
OJSD
1/4 to 2 ct.



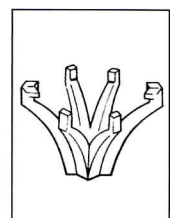
PJSD 3
3 prong
1/4 to 1 ct.
5.5 to 6.5 mm



PJSD 5
5 prong
1/2 to 2 ct.
6.5 to 10.5 mm

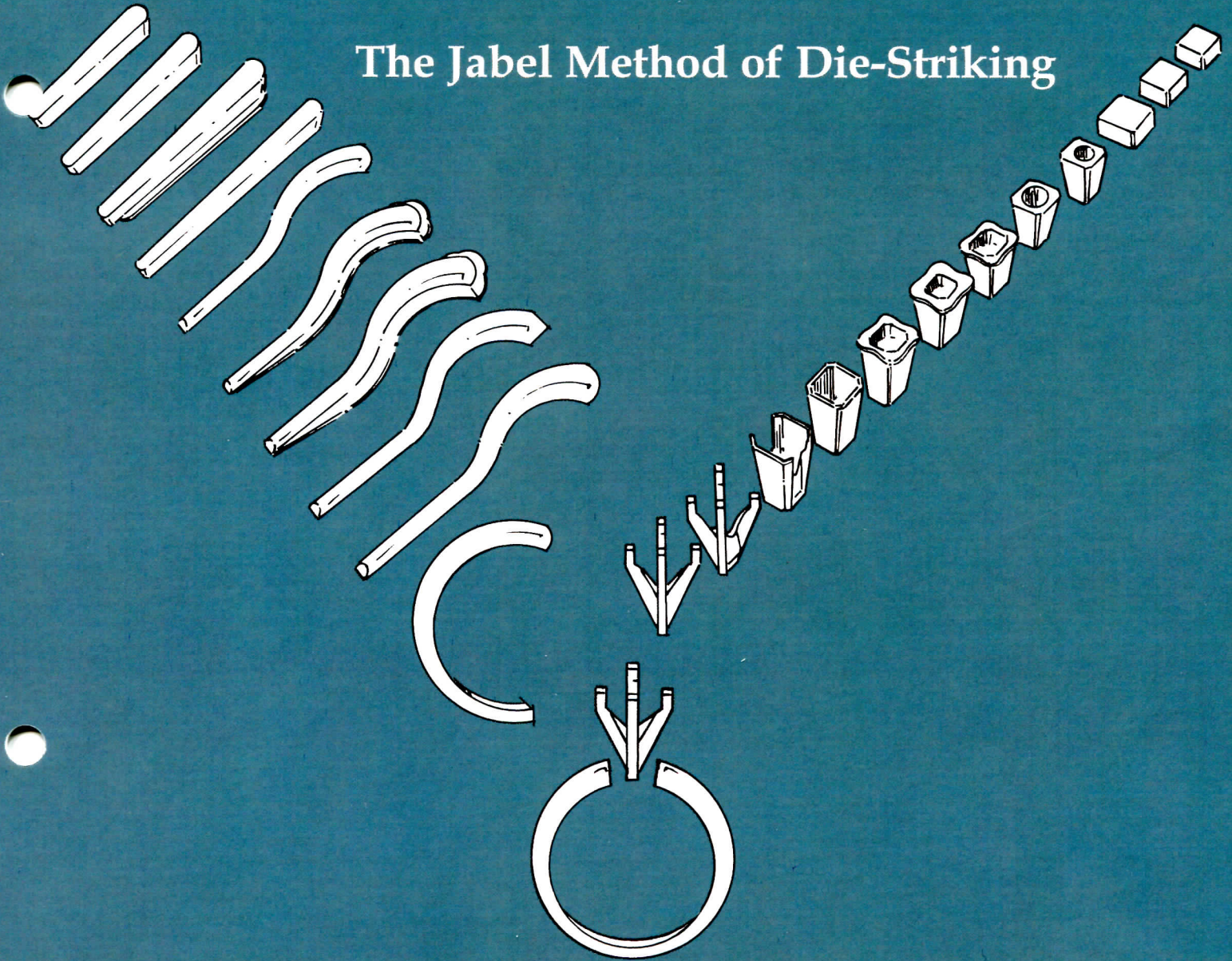


OJTB
1/2 to 3 ct.



MJTB
1/2 to 1-1/2 ct.

The Jabel Method of Die-Striking



The Jabel Method creates the safest, most beautiful settings, shanks and findings to display your precious diamonds and gems.

Almost 90 years of experience gives us the right to make this statement. So - how do we do it? This illustration shows the progression of our Jabel JSN setting and 2985 shank. A bar of alloyed gold is rolled under heavy pressure producing a metal ribbon that is non-porous, solid, homogenous and uniformly strong in the desired thickness. Pieces are blanked out by dies and put through alternate operations of pressure (striking) and heat treating (annealing) as demonstrated in the drawing above. This creates a gold finding that is not only dense, but also very malleable. All of our settings and most of our jewelry parts are created in this fashion. There isn't a better method of creating long wearing, high-quality jewelry.

This process, used exclusively by Jabel, allows us to keep control over all aspects of fashioning the finest jewelry available. Hubs, dies and forces used in the striking process are produced right in our own Tool Room. The gold is alloyed in our own furnace room. Gold is available in 18K yellow and white and 14K yellow, pink and green. Our 18K white gold is alloyed with paladium for extra-strength and malleability. We also create desired pieces in platinum. The Jabel Method, sometimes requiring 35 separate steps, creates jewelry that is perfectly proportioned, exquisite in detail and superior in finish. Our jewelry will stay beautiful for many, many years. Our Method and our attention to detail allow you, our customer, to have complete confidence and total trust in the Jabel products that grace your store displays.

Fancy Rings



DCF1253



DCF1125



DCF1274



DCF1255



DCJF3048



DCJF3049



DCJF3043



DCF1261



DCF1257



DCF1256



DCF1260



DCJF3046



DCJF3026



DCF1227

Fancy Rings



BLF1124



DCF1137
DCF1134



DCF1136
DCF1135



DCF1125
DCF1126



BLF1249



DCF1253



DMF1246



DMF1245

NSSW2211



DMF1248

NSCW2304

DCSW2319



DCF1234



DCF1227



DCF1214



DCF1230



DCF1116
DCF1092



DCF1112



DCJF3051



DCJF3052



DCF1093



DCJF3053



DCF1105

Diamond Ensembles



DM4385

DC4385W



DM4443
DM4442

DC4443W
DC4442W



DM12074

DC1W2074



DM4485

DC4485W



DM12078

DC1W2078



DM12075

DC1W2075



DM12051

DC1W2051



DM12071

DC1W2071



DM4486

DC4486W



DM4470

DC4470W



DM12076

DC1W2076

Diamond Ensembles

DM4515



DC4515W



DM4514

DM4427



DC4427W

DM4419
DM4420



DC4419W
DC4420W

DM4407
DM4434



DC4407W
DC4434W

DM4392



DC4392W

DM4400



DC4400W

DM4391



DC4391W

DMJ2024



DCJW2024

DMJ2056



DCJW2056

DM4454



DC4454W

DM4451
DM4450
DM4449
DM4445



DM4453



DC4453W

DM3969
DM3968
DM3966



DC3969W
DC3968W
DC3966W

Diamond Ensembles

DM4497/S



DC4497W/SD



DM4463



DMJ2068

DM4481



DC4481W

DM3872



DC3872W

DM3871



DC3871W/CO



DM4495

DM4480



DC4480W

DM4091



DC4091W/CO



DM3935



DM4493
DM4492



DM4494

DM4505



DC4505W

DM4502/S



DC4502W/SD

DM4496/S



DC4496W/SD



DM4411
DM4410
DM4409



DM4450



DMJ2069



DMJ2067



DM4489

Diamond Ensembles



DMJ2079



DMJ2080



DM4163

DC4163W



DM3929

DC3929W



DM4151

DC4151W



BL4406W

BL4406

BL4406W
Contour



DM4207

DC4207W



BL3984

NSSW1932



BL3119

NSCW965



DM4133
DM4137
DM4140

DC4133W
DC4137W
DC4140W

Solitaires



BL4511



BL3900



BL4512



BL4510



BL3161

Solitaires



BLJ1047

NSJW1047



BL4482/EB



BLJ1052/STB



BLJ1034



BLJ1029



BLJ1035



BLJ1019



BL4507



BLJ1051



BL4509



BL4508



BL4498



BL4474



BL4472

Solitaires

BL2985



DCW2307



BL4459



BL4444

BLJ2048



BL4506



DCW2319



BL4446



BLJ1043

BLJ1057



NSJW1057



DMJ2077

BL4500



BLJ1056



BLJ1054



BL4504



NSSW2341



NSJW1056

BL4503



NSSW2339



DM4502/S

DC4502W/SD



BL4501

NS4501W

Seamless Wedding Rings



NSSW2277



NSSW2276



NSSW2275



NSSW2274



NSSW2314



NSSW2324



NSSW2325



NSSW2335



NSSW2334



NSSW2328



NSSW2327



NSSW2331



NSSW2272



NSSW2316



NSSW2309



NSSW2308



NSSW2337



NSSW2341



NSJW1056



NSSW2339



NSSW2207



NSSW2205
NSSW2206



NSSW2204
NSSW2203



NSSW2201
NSSW2202

Seamless Wedding Rings



NSSW2333



NSSW1990



NSSW1747



NSSW1746



NSSW1744



NSSW1749



NSSW1270



NSSW1271



NSSW1275



NSSW1272



NSSW1273
NSSW1274



NSSW1276



NSSW1277



NSSW1289/6



NSSW2028



NSSW1660



NSSW1661



NSSW1664



NSSW1665



NSSW1662



NSSW1666



NSSW1663



NSSW1667
NSSW1668
NSSW1669
NSSW1670

Carved Wedding Rings

BL3119



NSCW965



NSCW939



NSCW943



NSCW934



NSCW937



NSCW2256



NSCW1438



NSCW2156



BLJW4057



NSCW2165



NSSW2342
NSSW2343



NSSW1220



NSCW2167



NSSW2340
NSSW2341



NSSW1205



NSSW2339
NSSW2338



NSSW2336



NSSW2349



NSSW2237
NSSW2348



NSSW2347



NSSW1948



NSSW2346



NSSW2344
NSSW2345



NSSW2215



NSSW2298

Diamond Wedding Rings



DCW2148



DCW2270



DCW2185



DCF1112 &
DCW2185



DCW2218



DCW1534



DCW1878
DCW1868



DCW1965
DCW1964



DCW2117



DCW2286



DCW2350



DCCW939/0.30



DCCW937/0.08



DCCW934/0.18

Three Stone Diamond Rings



DCT559/3



DCW2265



DCT563/3 JM



DCT562/3



DCT564/3



DCF1273



DCT558/3



DCJW4038



DCJT1000/3

Diamond Wedding Rings



DCW2329



DCJW2074



DCJW4081



DCJW4028



DCJW4080



DCW2291



DCJW4079



DCW2127



DCW2326

Diamond Anniversary Rings



DCAW1021



DCAW1019



DCAW1036



DCAW1035



DCAW1025

DCAW1026



DCAW1020



DCAW1029



DCAW1018



DCAW1000
DCAW1003 (1/2 way around)



DCAW1001
DCAW1004 (1/2 way around)



DCAW1002
DCAW1005 (1/2 way around)



DCAW1033
DCAW1034



DCAW1011



DCAW1013
DCAW1017



DCAW1010



DCAW1012



DCAW1027
DCAW1028

Restyle/Remount and Special Orders

“Masters of the Priceless Art of Excellence” truly makes itself apparent in our Remount and Special Order Department. The best part of Jabel kicks into gear when a customer contacts us with a special project. Jabel has the resources to create a specific design for a customer’s individual needs and desires. This special piece of jewelry is created for you and your customer by the same talented Jabel artisans using the same high-quality parts and findings that produce our Jabel line.

These two pages are only the tip of the iceberg. The rings and pendants illustrated can accommodate a variety of center stones and melee. All the pieces in the catalogue, except for clusters and add-a-section bracelets, are available for your special orders. We can create a piece for you even if there is no similar piece presently in the line. We will take your information, create a personal rendering and estimate and, upon your authorization, proceed to create a finely made, dazzling piece of jewelry unique to your customer, to be cherished and admired for generations.



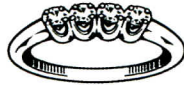
BX1



BXW1



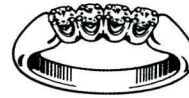
BBX1



BBX1

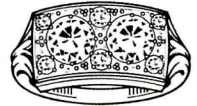
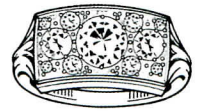


DBX1



DBXW1

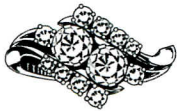
F1251



F1251



GX3



GX13



HX2



HX32



JX3



JX16



KX4



KX5

LX14



LX24

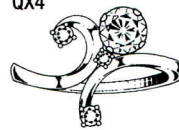


PHX3



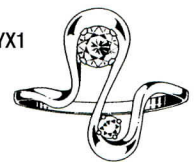
PHX9

QX4



QX10

YX1



YX10



Restyle/Remount



BLT567/3



BLT565/3



BLT494/3



BLT554/3



BLT566/3



DMJ2062



BLJ1022



BLJ1023



DMJ2061



BLLX



BLF1251



DMF1080



DMT557



BLABX1



DMF1272



BLBBX1

BLABXW

BLBBXW



BLJF3050



BLJF3047

Jabel Color



CDE1006/RUB



CDE1006/
BLUSAP



CDE1006/EMR



DCE221/RD



DCE221/SD



DCE221/ED



CDR1366/RUB



CDR1366/BLUSAP



CDR1366/EMR



DCF1126/RD



DCF1137/ED



DCAW1031/SD



DC4420W/DS



DC4420W/RD



DC4420W/ED



DCAW1001/RD



DCAW1002/SD



DCF1244/DR



DCF1219/DE



DCAW1020/RD



DCAW1013/SD



DCW2265/RD



DCW2265/SD



CDB1232/EMR

CDB1232/RUB

CDB1232/BLUSAP



CDB1208/EMR

CDB1208/RUB

CDB1208/BLUSAP

Men's Rings



DMG233



DMG234



BLG241



BLG177



DCG168



BLG177/A



BLG183



BLG207



BLG146



DMG240



DMG231

Pendants and Earrings

DCP402



DCP399/DIA



DCE252



NSCH201

DCP298



NSCH201

DCP299



DCE203



DCE219



DCE249/DIA

NSCH201

DCP300



DCE202



DCE222



DCE250



DCE251



NSCH201

DCP369



DCJE5034

DCP401



Pendants and Earrings

DCP405



DCP404



DCP403



DCP408



NSCH201



DCP351



NSCH201



DCE191



DCE93



DCE256



DCE259



DCE221



DCP395



DCP396



NSCH201



DCP397



DCE243



DCE260



DCE261



NSCH226

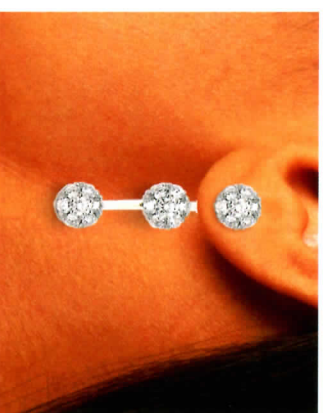


DCP406

DCE254



DCE255



Pendants and Earrings

NSCH201



DCP268

NSCH201



DCP254

NSCH201



DCP392



DCJP6011



DCE242



DCJE5035

NSCH201



NSC114



DCJE5036



DCE258

DCE203 (stud)



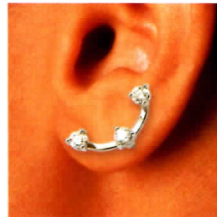
NSCH201



NSC112



DCE257



DCEJ169

DCEJ168

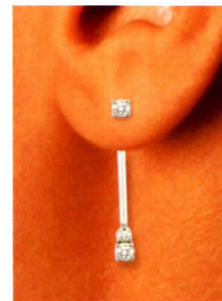
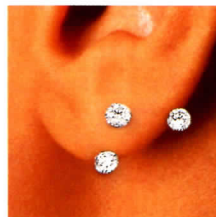
NSCH201



NSC111



DCE253



Pendants and Earring Jackets

DGP3998



NSCH201



DCCN101

DCCN100



DCLP6001



DCE244



DGP400



DCC119



DCC118



DCC117



NSCH201



NSJPE606

DGJEJ7002



DGJEJ7001



DCEJ167



DGJEJ7000



Diamond Slides

NSCH226

DCANT182

NSANT83

DCJANT1009

DCANT188

DCANT112

DCANT36

DCANT106

DCANT137

NSANT16

NSCH229

DCJANT1008

DCANT154
DCANT153
DCANT155
DCANT156

Diamond Slides

NSAN115

DCAN100

DCAN101

DCAN102

DCAN103

DCAN104

DCAN108

DCAN178

NSAN120

NSAN190

DCAN182/SD

NSAN191

DCAN102/SD

DCJAN1005

NSCH229

DCJAN1000

DCJAN1007

DCAN101

NSAN176

DCAN175

NSAN177

DCAN108/DE

DCAN102/DR

DCAN102/DS

DCAN108

DCAN103

NSAN202
NSAN200
NSAN201
NSAN203

DCAN136

NSAN195
NSAN196
NSAN197
NSAN198
NSAN199

DCAN102/RD

DCAN102/DS

NSAN194
NSAN193

NSCH229
Extender

DCAN100/ED

Diamond Slides

DCAN205/4 (4 Diamonds)
 DCAN205/8 (8 Diamonds)
 DCAN205/12 (12 Diamonds)
 DCAN205/16 (16 Diamonds)

NSAN208B
 (Black Jade Set Complete)

DCAN209
 (Complete as shown
 without chain)

DCJAN1010

DCJAN1010SD

NSCH226 (Omega Chain)

NSAN206/S (Small Gold Bar)
 NSAN206/M (Medium Gold Bar)
 NSAN206/L (Large Gold Bar)

DCAN207
 (Complete as shown
 without chain)

DCAN204S

NSCH226

DCAN204

NSAN190

NSAN191

DCAN136

DCAN103

DCAN129

DCAN101

DCAN132

The Jabel Add-A-Section® Bracelet

Welcome to the world of the Jabel Add-A-Section Bracelet. Enter this world and your gift-giving needs from holiday to holiday, celebration to celebration are taken care of. Select a stylish Starter or partial bracelet for your special occasion. Then, for each birthday, anniversary and holiday thereafter, add another section.

The gift that grows more precious with time.

The bracelet becomes a magnificent, complete piece of jewelry - to be worn comfortably and securely, to dazzle and be adored, to be treasured for generations.

The look, the quality, the feel - all are incomparable. Year after year, additional sections match perfectly - no problems. These bracelets truly will last for generations. Enjoy Jabel quality and find out why we are "Masters in the Priceless Art of Excellence."

The bracelets pictured on the following pages are our newest and most popular styles.

Top to Bottom: DCFB112/complete, DCFB112/5, DCFB112/starter



Creating the Jabel Add-A-Section® bracelet



DCFB120/starter

DCFB120/8

DCFB120/complete

Add-A-Section® Bracelets



DCFB11/3



DCFB22/3



DCFB44/3



DCFB68/B/5



DCFB77/6



DCFB77/26



DCFB78/5



DCFB87/5



DCFB91/4

Add-A-Section® Bracelets



DCFB93/3



DCFB93/Complete



DCFB94/4



DCFB94/8



DCFB95/5



DCFB97/5



DCFB98/B/3



DCFB103/3



DCFB103/5



DCFB104/3

Add-A-Section® Bracelets



DCFB106/8



NSFB107/4



DCFB110/Complete



DCFB111/5



DCFB112/3



DCFB112/7



DCFB113/3



DCFB114/11



DCFB115/6



DCFB115/17

Add-A-Section® Bracelets



DCFB51/3



DCFB51/18



DCFB58/7 Diamond Leaf



DCFB63/3 Carved Leaf



DCFB63/7 Carved Leaf



DCFB68/5



DCFB117/5



DCFB118/6



DCFB118/16

Add-A-Section[®] Bracelets



DCFB119/4



DCFB119/Complete



DCFB120/8



DCFB121/8



DCFB122/7



DCFB123/8



DCFB124/8



DCFB125/4



DCFB125/16

Complete Bracelets



DCFB115/
Complete



DCFB114/
Complete



DCFB116/
Complete



DCJCB104



DCJCB107



DCJCB105



DCCB100/DR



DOB1024/RDIA

Bangle Bracelets



NSJB1000



DCJB1002



DCJB1001



NSJB1003



DCJB1004



DCJB1005



NSB114



NSB106



NSB100



NSB101

Catalog Index

Add-A-Cluster®	34-36	Diamond ensembles	10-13
Add-A-Section® bracelets	37-43	Diamond necklaces	32, 33
Anniversary rings	21	Diamond pendants	30, 33
AN's	34-36	Diamond slides	34-36
Bangle bracelets	44	Diamond wedding rings	10, 13, 15, 19, 20, 23
Bracelets	24-28, 37-44	Dinner rings	8, 9, 20, 23-28
Carved wedding rings	9, 13, 15, 16, 18, 19	Drop-in wedding rings	19
Chains	30-36	Earring jackets	32, 33
Channel set rings	8, 10-13, 15, 21, 24, 25	Engagement rings	10-15, 18, 23
Cluster earrings	25, 30-32	Engraved engagement rings	12, 13, 15
Cluster jewelry	8, 9, 25, 36, 38-42	Engraved wedding rings	9, 13, 15, 16, 18, 19
Cluster rings	8, 9, 25, 26	Engraved wedding sets	13, 15, 18
Cluster slides	34-36	Eternity rings	21, 24, 25
Cocktail rings	8, 9, 20, 23-28	Fancy colored stone rings	24-28
Colored stone & diamond anniversary rings	24, 25	Fancy rings	8, 9, 20, 23-28
Colored stone & diamond earrings	25, 26	Gent's rings	24, 26-29
Colored stone bracelets	24-28	Heart pendants	32, 33
Colored stone jewelry	12, 15, 24-28, 35, 36	Men's rings	24, 26-29
Colored stone rings	24-28	Necklaces	32, 33
Contour wedding rings	9-11, 13, 15	Omega chains	31, 34-36
Crosses	32, 33	Right hand rings	8, 9, 20, 23-28
Diamond anniversary rings	21	Ring guards	17
Diamond bangle bracelets	44	Seamless wedding rings	15-18
Diamond bracelets	37-44	Slides	27, 34-36
Diamond carved wedding rings	19	Solitaires	13-15
Diamond crosses	33	Three stone diamond rings	20, 23, 24
Diamond earrings	30-33	Wedding rings	9-20, 23-25