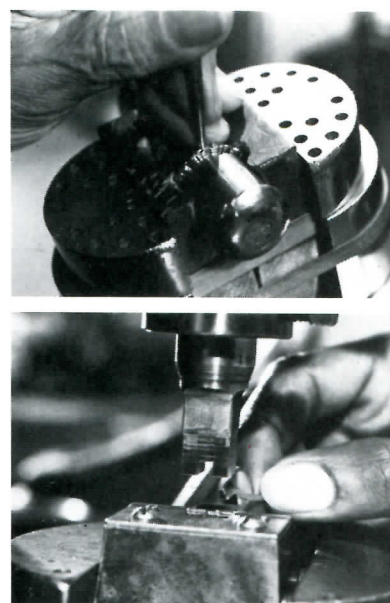
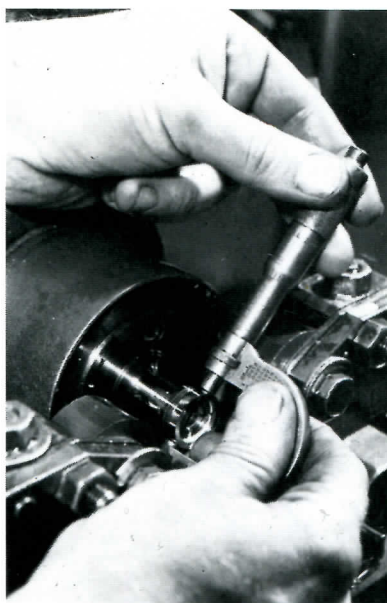


TABLE OF CONTENTS

Introduction	2
Add-Ons	4
Jabel Jewel	6
Add-a-Section® Bracelets	8
Casual Jewelry	15
Crosses, Bangles, Bracelets, Brooches	16
Pendants	17
Earrings	18
Earring jackets	20
The Ring	22
Engagement and matching wedding rings	24
Drop-in wedding rings	32
Wrap-around, channel wedding rings	33
Diamond wedding rings	34
Sculptured wedding rings	38
Love circles	40
Seamless wedding rings	41
Fancy rings	44
Colored Stone Rings and Jewelry	48
Men's Rings	49
Jacor	51
Rings	52
Bracelets, earrings, pendants	54
Locketts, jewelry	55
Remount and Special Order	56
Information and Explanations	67

Jabel is People

The Jabel personality has many facets. The excellence of our product is matched by the skills and knowledge of the team that produces and services it. Innovative ideas and old-fashioned principles are constants.



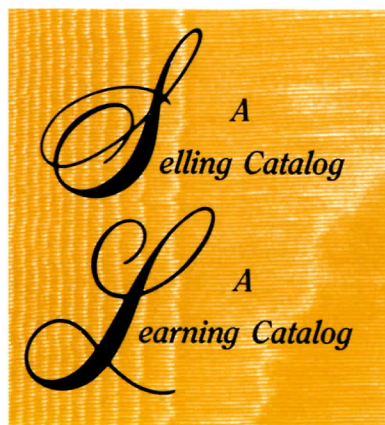
Perhaps because of the nature of our product, we're great believers in personal contact. Love and romance get instant attention! Your pleasure in doing business with us is what we look forward to every day.

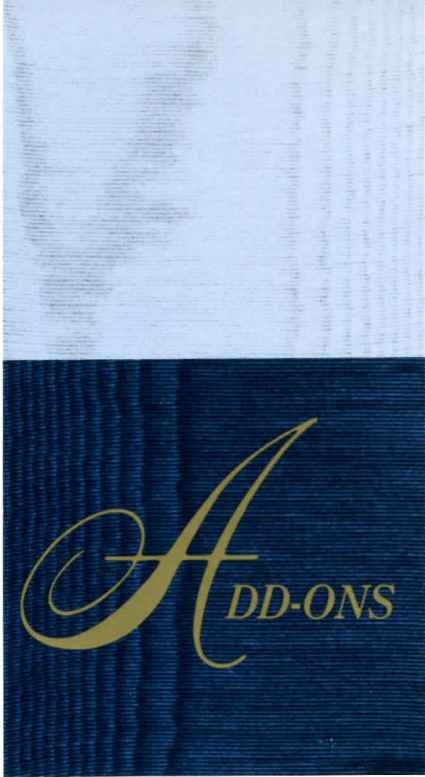
We extend an open invitation to tour our facilities. A day, or even a few hours, at

the plant will not only acquaint you with the incredibly painstaking methods of manufacture; it will also serve as an introduction to artisans and staffers whose friendship you will value as highly as their abilities.

Filling the spectrum of jewelry categories and services are Jabel, Jabel II and Jacor; Special Order and Remount.

You will find them all magnificently represented in full color on these pages. Please take the time to learn our products and their infinite possibilities. With the addition of your own knowledge, enthusiasm and sales ability, the book will come alive. **Welcome to Jabel!**





For all the times that are not engagements or marriages, here are the "Gifts that grow more precious with time: The Add-a-Section® Diamond Bracelet and the Add-a-Cluster® Diamond Necklace."

With the present strong emphasis on fashion and "individual" looks in mind, your Catalog displays on its opening pages those products designed for the woman whose

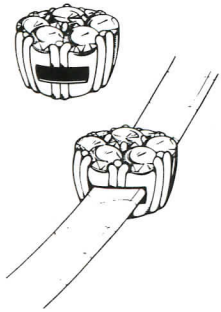
lifestyle demands adaptability and frequent change. The AN's and FB's were created for the convenience of today's jewelry purchaser.



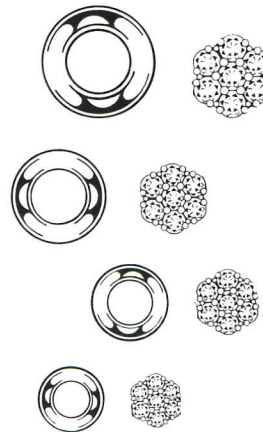
There is almost too much to say about the incredible Add-a-Cluster® necklace. Its beauty, its flexibility, its *usefulness* cannot be appreciated until all of the unique features are demonstrated. This is the jewel that can be worn on any and every occasion, in dozens of different ways. New accessories, reflecting the latest trends in form and color, are introduced regularly.

As a necklace or as a bracelet, the 14K yellow or white gold chain can be ordered in any length. An inspired travelling companion, the change from tailored daytime to glamorous evening can be accomplished by no more accessories than it takes to fill the palm of the hand.

This is the jewel that will be purchased for an occasion or on impulse... as a gift or for the self. Properly inventoried and displayed, it is guaranteed to have your customer drop in at any time with a singular request, "Please show me the new AN's."



Every piece created to slide on the AN chain is calibrated precisely to fit over the specially designed clasp.



Available for all "AN" diamond clusters: highly reflective frames in 18K white or 18K yellow gold.

Clusters, round and oval, are available from .33 to 1.5 carats, total weight.

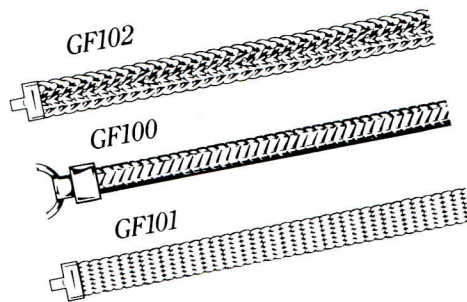
See first Add-on page for illustrations of framed clusters.

For each of the almost 40 years since its creation, the Add-a-Section® Diamond Bracelet has grown in importance as a jewel to promote 12-month-a-year traffic. The original "Gift that grows more precious with time,"® it has established itself as a tradition with those jewelry purchasers who are grateful for the answer to "What'll I get her *this* year?" It is the possible, affordable realization of a heretofore impossible dream: The Complete Diamond Bracelet.

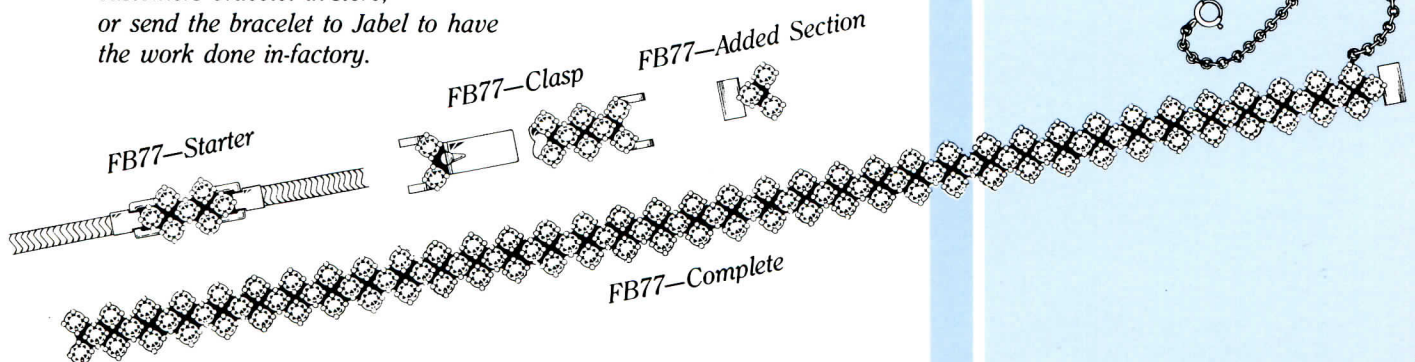
Starting with a single section on a gold-filled chain, adding sections to celebrate holidays and significant personal occasions, the bracelet builds as a circle of wonderful memories. Shorter and shorter grows the gold-filled chain, longer and longer the row of exquisite, 18K yellow or white gold and diamond sections. Known by its FB designation, the line is extensive and runs the style gamut from the straight-line FB51 (known currently as the tennis bracelet) to the heavily diamonded FB58 and FB77. The mechanics are simple (please see accompanying drawings) and the machining absolutely on the mark. There are sections being shipped today for bracelets started 15 and 20 years ago!

The add-ons, AN's and FB's alike, are an unbeatable means to developing a close and continuing relationship with your clients.

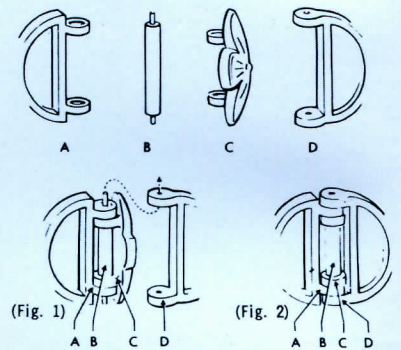
Choice of 3 styles of gold-filled chain for Add-a-Section® Diamond bracelets.



Add newly purchased sections to your customers' bracelet in-store; or send the bracelet to Jabel to have the work done in-factory.

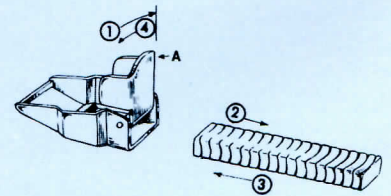


To assemble "add-a-section bracelet" place "A" and "C" together. Slip "B" through openings of "A" and "C" (Fig. 1). Depress spring pins of "B" and snap "D" over "B" (Fig. 2).



To Shorten Chain:

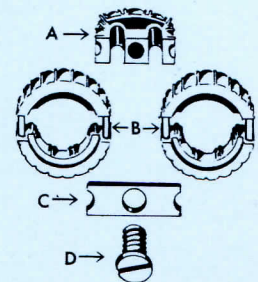
- 1) Lift clip A on underside of adjustment box.
- 2) Pull chain out and cut to shorten.
- 3) Push chain into box;
- 4) Close clip tightly.



FB78

To add sections see diagram.

"A" fits on top of the lugs of the two connecting sections of "B". Then, "C" fits up against the back of these lugs and "D" screws "A" and "C" together locking the lugs of "B" safely between.





- A - CH225
- B - CH227
- C - CH226
- D - NS AN134 (frame)
- E - DC AN112 1.30 tw
- F - DC AN102 .75 tw
- G - DC AN118 .72 tw
- H - DC AN110 .30 tw
10x8 amethyst
- I - DC AN132 .096 tw
- J - DC AN101/DR .39 tw
3.2 mm ruby
- K - DC AN129 .096 tw

- L - NS AN126 (frame)
- M - DC AN103 1.00 tw
- N - NS AN115
- O - NS AN123 (frame)
- P - DC AN100/DE .24 tw
2.9 mm em
- Q - NS AN120
- R - NS AN124 (frame)
- S - DC AN101/DE .39 tw
2.2 mm em
- T - NS AN125 (frame)
- U - AN102/DE .60 tw
3.4 mm em

- V - DM AN127 .40 tw
- W - DC AN121 .40 tw
- X - DC AN122 .18 tw
- Y - DC AN130 .18 tw
- Z - NS AN116
- Aa - DC AN102/SD .15 tw
3 mm saphs
- Bb - DC AN128 .90 tw
- Cc - NS AN135 (frame)
- Dd - DC AN136 1.00 tw
- Ee - NS EJ163
- Ff - DC AN101 .50 tw

The
ABEL
JEWEL
COLLECTION



- A - CH226
- B - CH225
- C - NS AN116
- D - DC AN136 1.00 tw
- E - DC AN100 .33 tw
- F - DC AN113 .17 tw
- G - DC AN109 .24 tw
8x6 rhodolite
- H - NS AN115
- I - DC AN101 .50 tw
- J - NS AN120

- K - DC AN102 .75 tw
- L - DC AN106 .75 tw
- M - DC AN100 .33 tw
- N - DC AN101 .50 tw
- O - DC AN102 .75 tw
- P - DC AN103 1.00 tw
- Q - DC AN104 1.30 tw
- R - DC AN108 1.50 tw
- S - NS BC105
- T - DC AN119 .096 tw

- U - DC AN102/RD .15 tw
3 mm rubies
- V - NS AN117
- W - DC AN106 .75 tw
- X - NS EJ143
- Y - DC AN100/DR .24 tw
2.9 mm ruby
- Z - DC EJ145
- Aa - DC AN101/DS .39 tw
3.2 mm saph



CH=chain NS=no stones DC=complete with stones tw=total weight of diamonds



FDD-A-SECTION®

DIAMOND BRACELETS



A - DC FB10/10 Complete 1.10 tw
B - DC FB10/1 Starter .11 tw
C - DC FB10 Section .11 tw

D - DC FB11/10 Complete 2.3 tw
E - DC FB11/1 Starter .28 tw
F - DC FB11 Section .23 tw

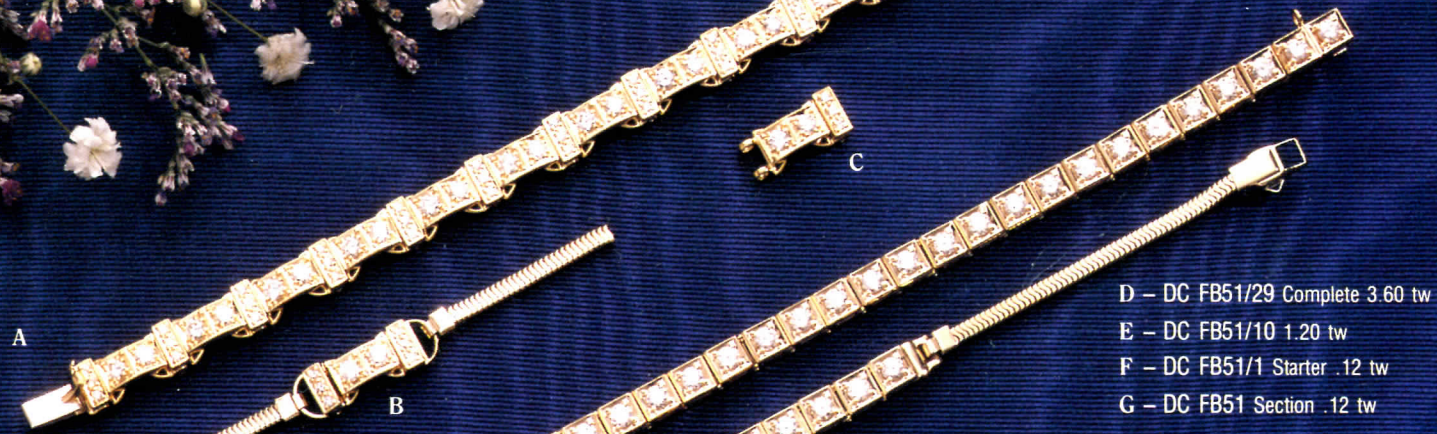
G - DC FB20/10 Complete 1.6 tw
H - DC FB20/1 Starter .21 tw
I - DC FB20 Section .16 tw

J - DC FB22/14 Complete 1.875 tw
K - DC FB22/1 Starter .165 tw
L - DC FB22 Section .135 tw

M - DC FB32/14 Complete 3.78 tw
N - DC FB32/1 Starter .30 tw
O - DC FB32 Section .27 tw



A - DC FB44/14 Complete 3.12 tw
 B - DC FB44/1 Starter .26 tw
 C - DC FB44 Section .23 tw



D - DC FB51/29 Complete 3.60 tw
 E - DC FB51/10 1.20 tw
 F - DC FB51/1 Starter .12 tw
 G - DC FB51 Section .12 tw



H - DC FB58/14 Complete 3.08 tw
 I - DC FB58/1 Starter .40 tw
 J - DC FB58 Section .22 tw



K - DC FB63/14 Complete 2.52 tw
 L - DC FB63/4 .90 tw
 M - DC FB63/1 Starter .36 tw
 N - DC FB63 Section .18 tw





A - DC FB65/17 Complete 3.83 tw
B - DC FB65/1 Starter .46 tw
C - DC FB65 Section .20 tw



D - DC FB68/12 Complete 2.82 tw
E - DC FB68/5 1.44 tw
F - DC FB68/1 Starter .48 tw
G - DC FB68 Section .24 tw



H - DC FB68/B/3 .72 tw
I - DC FB68/B/1 .24 tw



J - DC FB73/13 Complete 3.03 tw
K - DC FB73/1 Starter .285 tw
L - DC FB73 Section .23 tw

ADD-A-SECTION®

DIAMOND BRACELETS (continued)

- A – DC FB77/33 Complete 5.25 tw
- B – DC FB77/11 1.85 tw
- C – DC FB77/1 Starter .35 tw
- D – DC FB77 Section .15 tw

- E – DC FB78/13 Complete 3.85 tw
- F – DC FB78/1 Starter .35 tw
- G – DC FB78 Section .275 tw

- H – DC FB79/14 Complete 1.54 tw
- I – DC FB79/1 Starter .14 tw
- J – DC FB79 Section .11 tw

- K – DC FB87/22 Complete 5.76 tw
- L – DC FB87/7 1.92 tw
- M – DC FB87/1 Starter .48 tw
- N – DC FB87 Section .24 tw



A – DC FB90/12 Complete 1.895 tw
 B – DC FB90/1 Starter .27 tw
 C – DC FB90 Section .16 tw

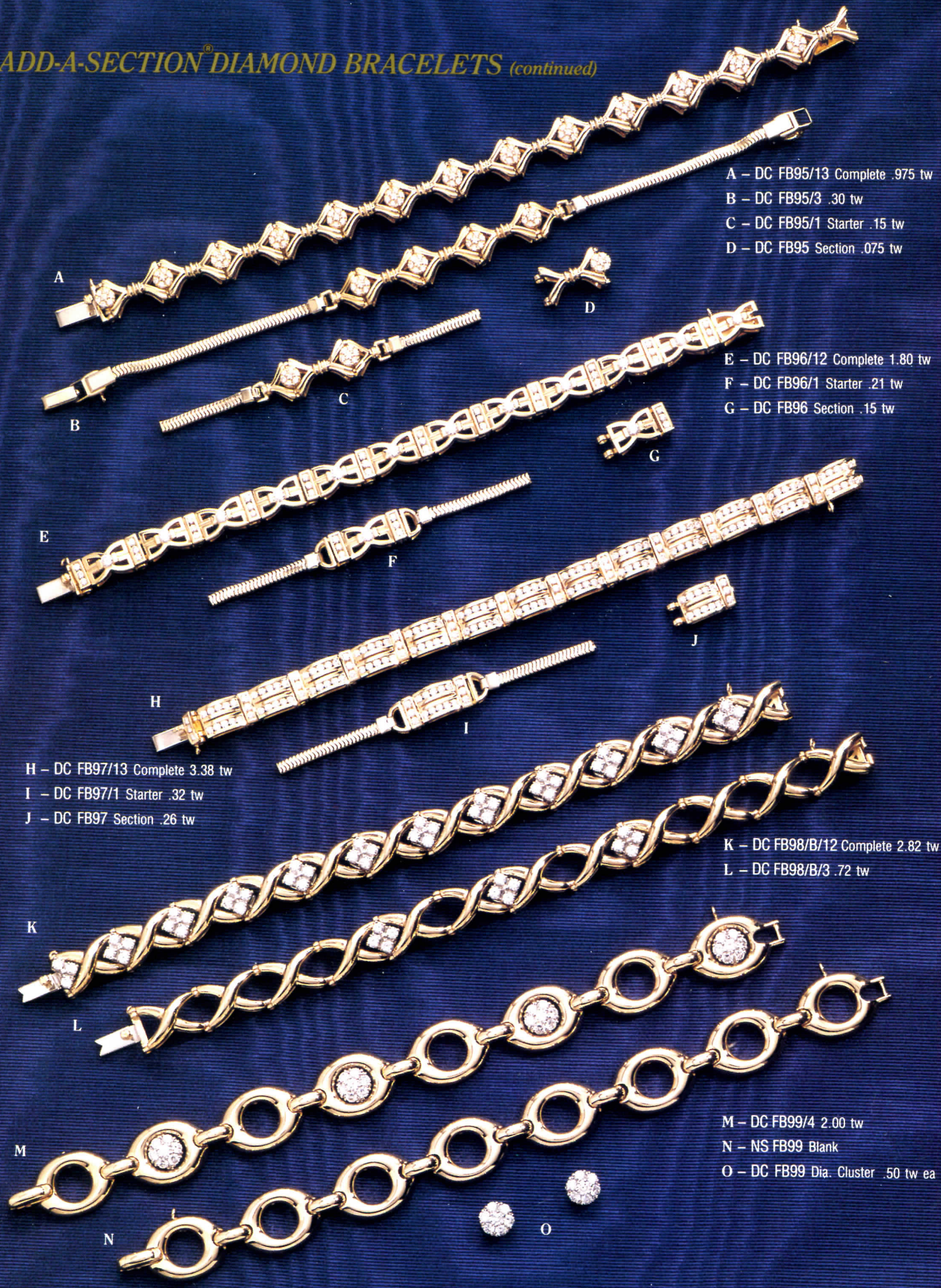
D – DC FB91/12 Complete 3.36 tw
 E – DC FB91/1 Starter .31 tw
 F – DC FB91 Section .28 tw

G – DC FB92/29 Complete .90 tw
 H – DC FB92/1 Starter .03 tw
 I – DC FB92 Section .03 tw

J – DC FB93/13 Complete 1.05 tw
 K – DC FB93/1 Starter .15 tw
 L – DC FB93 Section .075 tw

M – DC FB94/14 Complete 1.54 tw
 N – DC FB94/1 Starter .22 tw
 O – DC FB94 Section .11 tw

ADD-A-SECTION[®] DIAMOND BRACELETS (continued)



A - DC FB95/13 Complete .975 tw
 B - DC FB95/3 .30 tw
 C - DC FB95/1 Starter .15 tw
 D - DC FB95 Section .075 tw

E - DC FB96/12 Complete 1.80 tw
 F - DC FB96/1 Starter .21 tw
 G - DC FB96 Section .15 tw

H - DC FB97/13 Complete 3.38 tw
 I - DC FB97/1 Starter .32 tw
 J - DC FB97 Section .26 tw

K - DC FB98/B/12 Complete 2.82 tw
 L - DC FB98/B/3 .72 tw

M - DC FB99/4 2.00 tw
 N - NS FB99 Blank
 O - DC FB99 Dia. Cluster .50 tw ea

ADD-A-SECTION DIAMOND BRACELETS (continued)



A - DC FB100/14 Complete 7.60 tw
 B - DC FB100/1 Starter .50 tw
 C - DC FB100 Section .50 tw

D - DC FB101/13 Complete 1.05 tw
 E - DC FB101/1 Starter .15 tw
 F - DC FB101 Section .075 tw

G - DC FB102/12 Complete .975 tw
 H - DC FB102/1 Starter .15 tw
 I - DC FB102 Section .075 tw

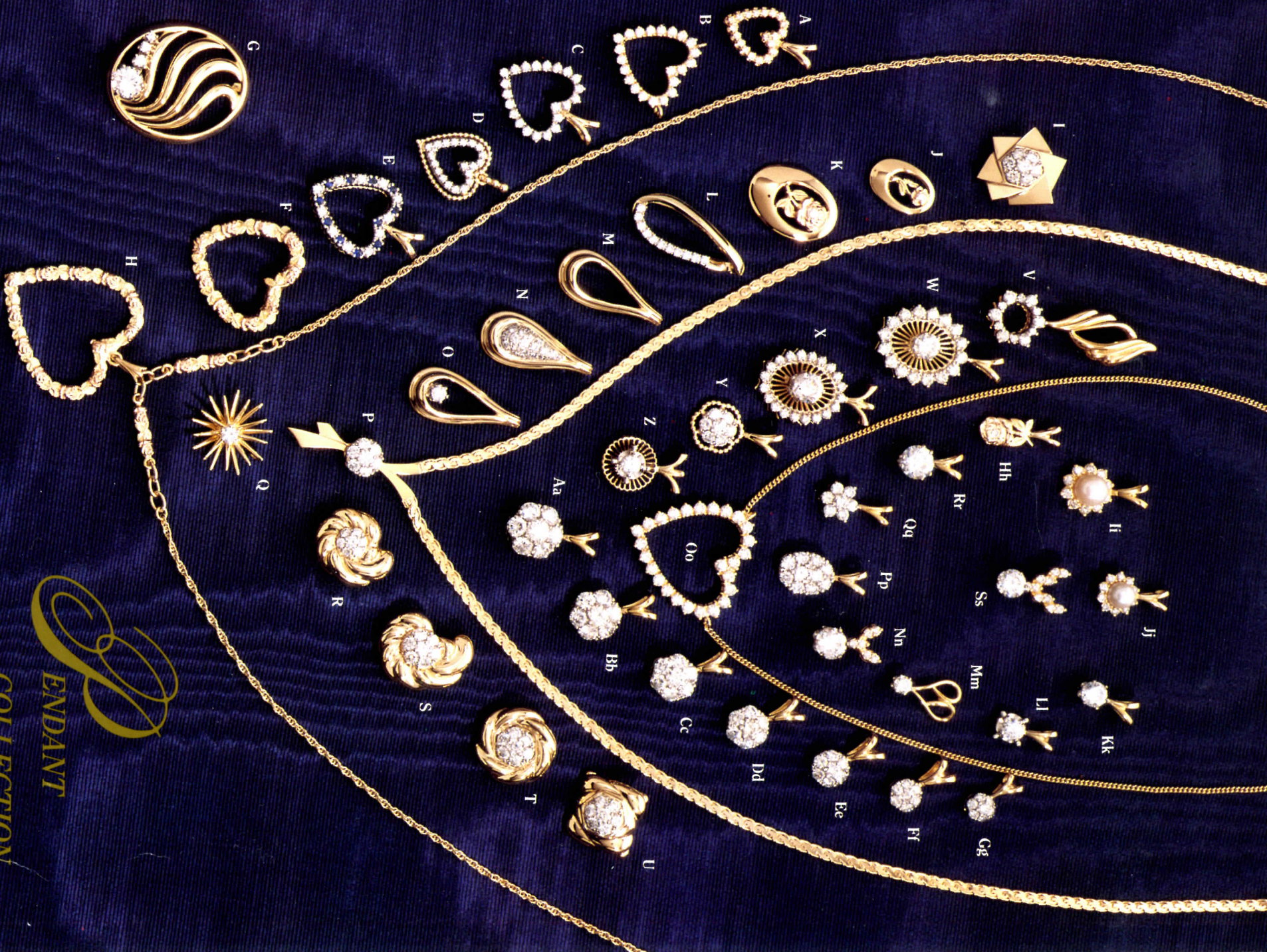
J - DC FB103/12 Complete .72 tw
 K - DC FB103/5 .30 tw
 L - DC FB103/1 Starter .12 tw
 M - DC FB103 Section .06 tw

N - DC FB104/12 Complete 4.26 tw
 O - DC FB104/1 Starter .60 tw
 P - DC FB104 Section .36 tw



COLLECTORS' CLASSICS





ENDANT
COLLECTION



The ARRING COLLECTION



DC E227
1.00 tw



DC JE5003
.05 tw



DC E232
.28 tw

DC JE5010
21 tw



DC JE5004
.80 tw
*



NS JE5011



DC JE5001
.215 tw



DC JE5014
.16 tw



DC E230/RD
12-2.3 mm rubies
.18 tw



DC E224
1.50 tw

DC JE5006
.51 tw mq
*



DC JE5010
.21 tw

DC JE5000
.51 tw
*



NS JE5012

DC JE5005
165 tw
*



DC JE5015
.18 tw



DC E228
1.00 tw



DC E225
1.00 tw



NS JE5013

NS JE5007
*



DC E226
.50 tw

**These styles, top and dangle, are interchangeable and priced separately. (See Price Book)*

EARRING JACKETS



All earring jackets are shown with diamond, diamond cluster, pearl or gold studs, for illustrative purposes only.



NS EJ103



NS EJ101



NS EJ153



NS EJ140



NS EJ132



DC EJ130
2-6 mm pearls



NS EJ161



NS EJ164



DC EJ162
.80 tw



DC EJ149
.80 tw



NS EJ157



NS EJ151



DC EJ124
.08 tw



NS EJ134



DC EJ125
.06 tw



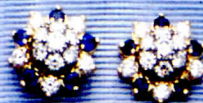
NS EJ127



DC EJ116
.60 tw



DC EJ116/DR
10-2 mm rubies
.30 tw



DC EJ116/DS
10-2 mm saph
.30 tw



DC EJ116/DE
10-2 mm emeralds
.30 tw



DC EJ117
.30 tw



DC EJ117/DR
10-1.5 mm rubies
.15 tw



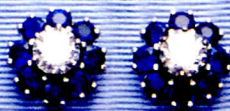
DC EJ117/DS
10-1.5 mm saph
.15 tw



DC EJ117/DE
10-1.5 mm emeralds
.15 tw



DC EJ115
.30 tw



DC EJ160/S
16-3 mm saph



DC EJ159/RD
12-2.4 mm rubies
.18 tw



DC EJ147
.78 tw



NS EJ136



NS EJ110



NS EJ139



NS EJ142



NS EJ128



NS EJ104



NS EJ106



NS EJ107

THE RING

R

From the year of its founding in 1916, until the summer of 1968, our Company was the Jabel Ring Manufacturing Company. The ring was its most important product and the one on which the Jabel Die-striking reputation was built.

In the words of an early factory manager: Anybody can design and build a brooch or a necklace. They just lie there. But a ring is a challenge, an engineering feat.

Even more, a ring is a design challenge. Given an area about the size of a fingernail and the centuries that rings have been treasured as symbols and adornment, innovation in ring design must be considered something of a miracle. Jabel designers perform that miracle again and again—for Jabel, for Jabel II and for Jacor. The lasting beauty and adaptability of the patterns shown on the following pages are a tribute to all the jewelry arts and artisans.



As long as the Diamond remains the most symbolic of all gems, the safe and beautiful display of the Diamond will remain the most important goal of the jewelry designer, the assembler and the setter. With the help of the tool-maker, the model-maker, the metallurgist, the finisher and the polisher, that goal is reached hundreds of times every day here in the factory.

The drawings illustrate the progression of a Jabel JSN setting from blank (the piece struck from a forged and rolled ingot of gold or platinum) to complete. The constant repetition of forging, rolling and striking results in metals that are not only dense,



but also very malleable. Every setting pictured is developed in the same way as are eighty percent of all the parts and findings used in the construction of Jabel jewelry.

To insure quality control of metals and methods, gold is alloyed in our own furnace room, and a state-of-the-art tool room turns out the hubs and dies and forces used in the striking process.



Recently, when times demanded a broadening of the company's focus, a new line was created and introduced. **Jabel II** is cast, contemporary and young at heart. The perfect molds and waxes produced by our own casting department are its pride and joy. The faster response time to customer needs and to fashion changes opens a new world of possibilities for the future.

The similarities between Jabel and Jabel II far outnumber the differences. The basic method of manufacture may be different, but the standards are as high as always. Once the parts have been formed, the process becomes remarkably the same: The same solder is used; each piece goes through the same steps in the polishing-finishing department; and each and every pattern satisfies the requirements of good taste, beauty, proper proportions and eye-pleasure. Die-struck or cast, the Jabel ring is something to instill pride in manufacturer, retailer and consumer.

Demand for other jewelry rises and falls. The Jabel ring is truly the eternal circle.

THE JABEL HEADS



OJTB
1/4 to 2 ct.



JM
1/4 to 3 1/2 ct.
4 to 9.5 mm



JTB
1/4 to 2 ct.
4 to 8 mm



MJTB
1/3 to 2 ct.



PJSD
3 Prong
1/5 to 3/8 ct.
5 to 6 mm



JL
1/8 to 1 1/4 ct.
3.2 to 7 mm



NRF
1/8 to 1 1/4 ct.
2.8 to 7 mm



JS-JSTW
1/4 to 2 1/4 ct.
3.9 to 8.5 mm



JSN-JSNTW
1/5 to 2 1/4 ct.
3.9 to 8.5 mm



JSD-JSDTW
1/4 to 2 ct.
4 to 8 mm



EJSD
1/4 to 2 ct.



JTO
1/5 to 2 1/4 ct.
3.9 to 8.5 mm



OJSD
1/4 to 2 ct.



JTJ
1/8 to 2 1/2 ct.
3.2 to 9 mm

ENGAGEMENT & MATCHING WEDDING RINGS

BL 4393
JSN



BL 2985
JSN

NS SW2028



NS SW2028
JSN

BL 3900
JS

NS W1662



BL 3161
JTO



BL 4168
JSN



BL 2985
NRF



BL 2985
OJSD

BL 4092
JSNTW

BL 3022
JSN



BL 2985
PJSD

DC W4092/CO2
.06 tw

NS SW1272

BL 2985
EJSD

BL 4209

NS SW1270



BL 4398
JSN



BL 2985
MJTB

BL 4380
JSN

NS W4380



BL 3161
JTO

BL 4402
JSNTW

BL 4169
JSN tw

DC W4169CO2
.06 tw

DC W4169CO3
.06 tw



BL 4380
MJTB

NS W4380

DC W3161CO3
.06 tw

DC W 4402CO2
.06 tw

BL 3161
MJTB

BL 4310
KT

NS W4310



BL 3984
JTO

NS SW1932

BL 4399
JSN

NS SW1272



BL 4100

DC W4100/5
.075 tw



BL 4321
JSNTW

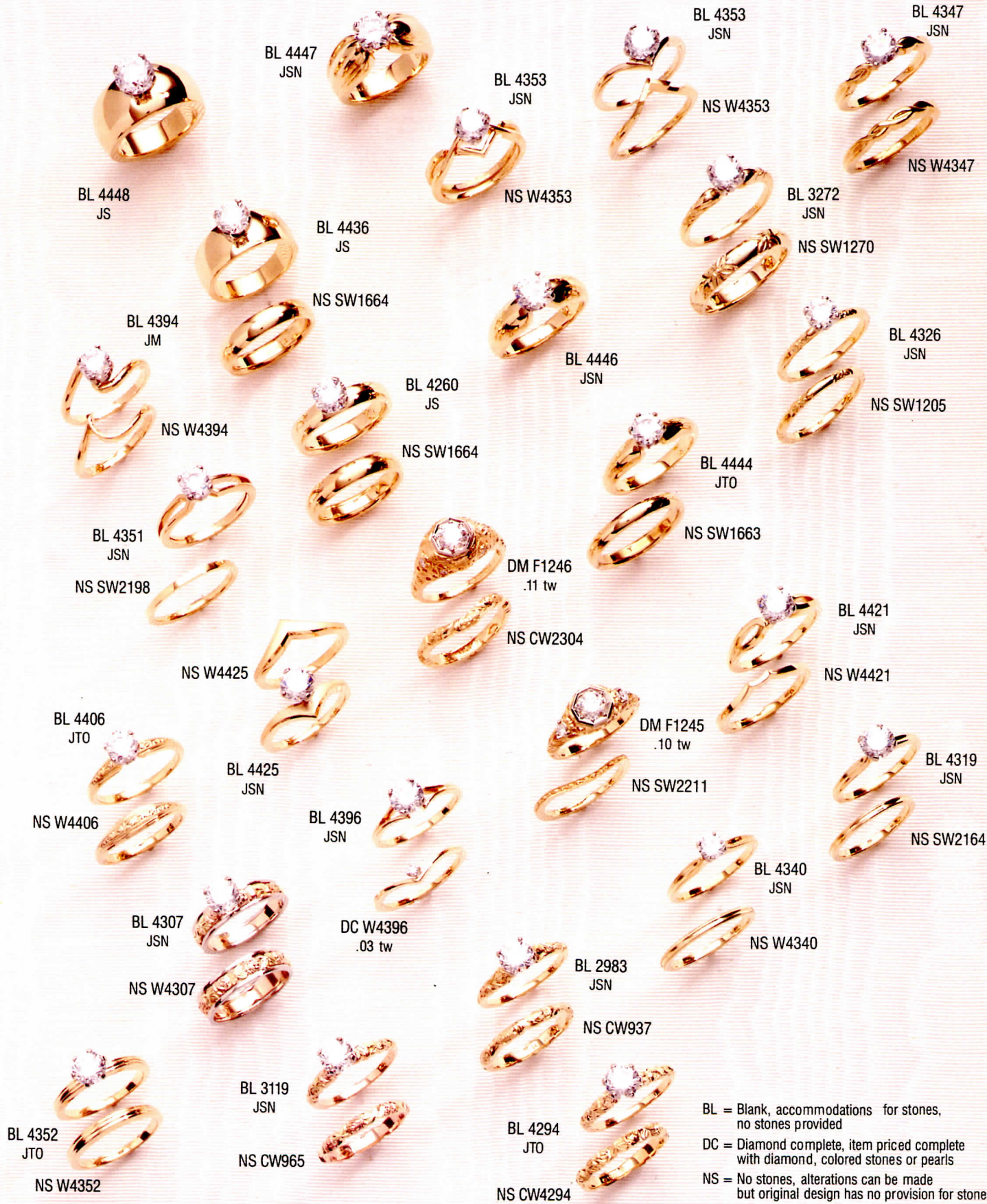
DC W4321
.08 tw



BL 4343
JS

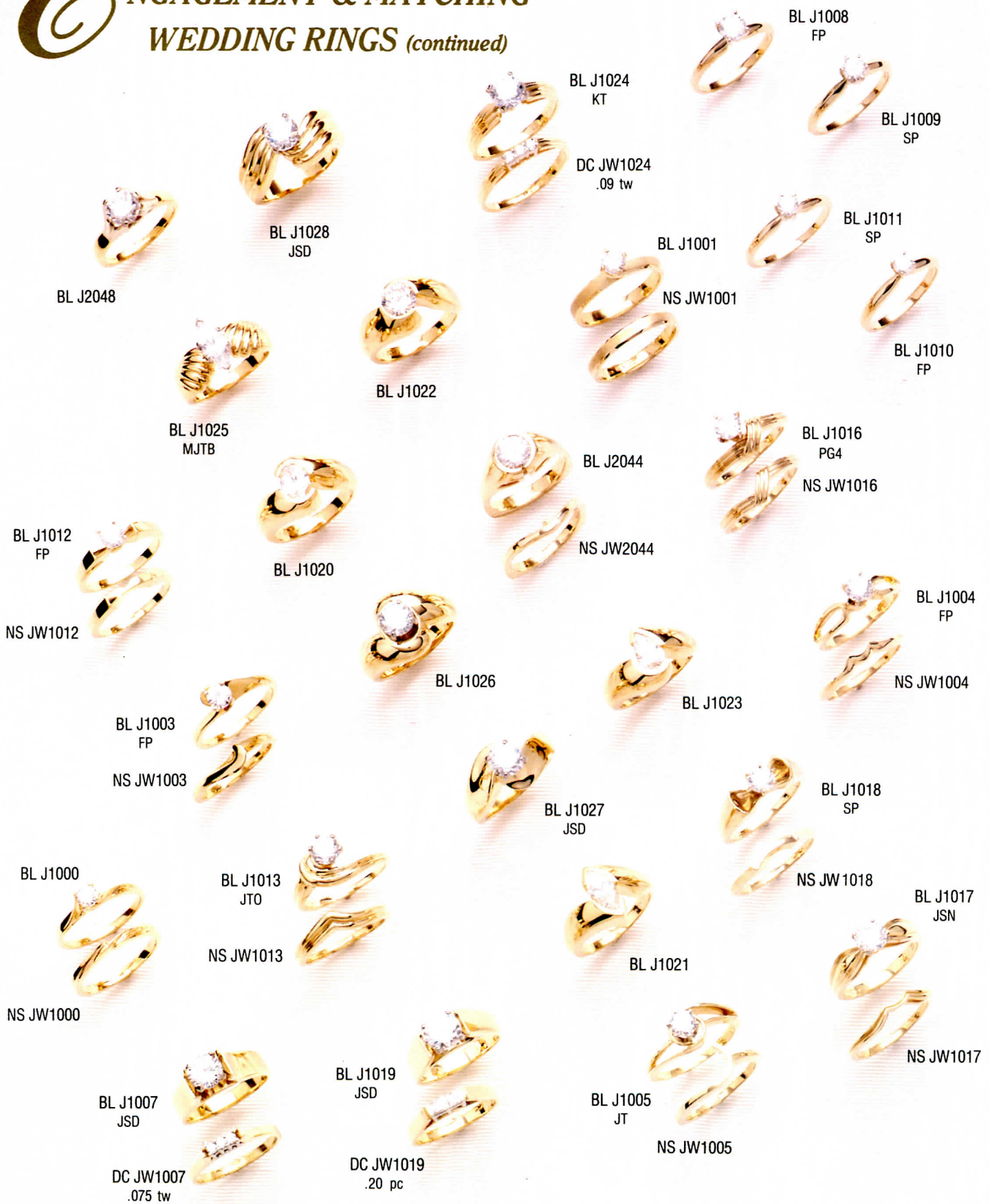
NS SW1325





BL = Blank, accommodations for stones, no stones provided
 DC = Diamond complete, item priced complete with diamond, colored stones or pearls
 NS = No stones, alterations can be made but original design has no provision for stones
 SW = Seamless wedding ring
 DM = Diamond mounting
 CW = Carved or engraved wedding ring

ENGAGEMENT & MATCHING WEDDING RINGS (continued)



BL = Blank, accommodations for stones
no stones provided

DC = Diamond complete, item priced complete
with diamond, colored stones or pearls

NS = No stones, alterations can be made
but original design has no provision for stones

SW = Seamless wedding ring

DM = Diamond mounting

CW = Carved or engraved wedding ring

DM 4422
JSN .08 tw

DC W4422
.105 tw

DM 4423
JTO .18 tw

NS W4423

DM 4442
JM .47 tw

DC W4442
.77 tw

DM 4359
JTO .06 tw

NS SW2028

DM 4306
JSN .04 tw

DC W4306
.02 tw

DM 4241
JTO .08 tw

DM 4149
JS .36 tw

DC W4149
.09 tw

DM 4229
JTO .04 tw

NS SW2028

DC W4229
.04 tw

DM 4208
JM .10 tw

NS W4208

DM 4150
JM .18 tw

DC W4150
.03 tw

DM 4415
JTO .225 tw mq

NS JW2049

DM J2049
JM .15 mq

NS JW2049

DM 4216
JSN .10 tw

DC W4415
.225 tw

DM J2025
FP .09 tw

DC JW2025
.09 tw

DM J2032
PG6 .16 mq

DC W4216
.05 tw

DM 4443
JM .34 tw

NS JW2032

DM J2000
MQ .02 tw

NS JW2032

DC W4443
.56 tw

DM 4430
JSN .11 tw

DC JW2000
.02 tw

DM J2052
JM .10 tw

NS JW2052

NS W4421

DM J2000
EC .02 tw

DM 3555
JSN .04 tw

DC W3555
.06 tw

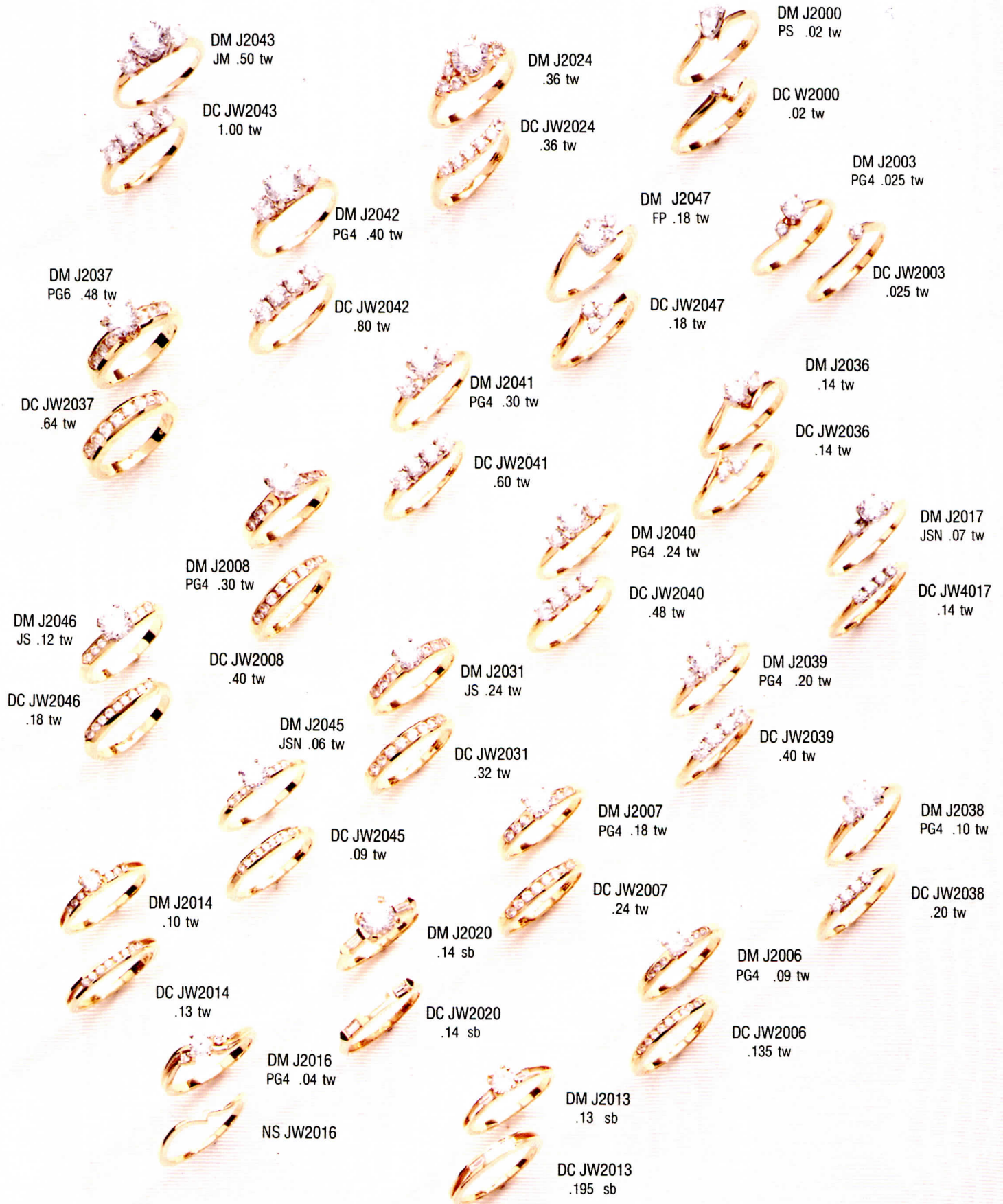
DC JW2000
.02 tw

DM 4387
JSN .05 tw

NS W4387

ENGAGEMENT AND MATCHING WEDDING RINGS (continued)





ENGAGEMENT & MATCHING WEDDING RINGS (continued)

DC W4408
.50 tw

DM 4416
JS .19 tw sb

DM 4428/SD
JS .20 pc
4-pc saph
DC W4428/SD
.40 pc
4 pc saph

DM 4408
JSNTW .50 tw

DC W4365
.20 tw

DC W4416
.285 tw sb

DM 4441/RD
4-2 mm rubies
JS .06 tw

DC 4365
JSTW .20 tw

DC W4441/RD
5-2 mm rubies
.12 tw

DM 4427
JS 1.14 pc

DM 3929
JS .36 tw

DM 4420
JS .66 tw

DC W4427
1.52 pc

DC W3929
.52 tw

DC W4420
.77 tw

DM 4407
JS .60 pc

DM 4042
JS .21 tw

DM 4400
JSN .12 tw

DC W4407
.80 pc

DC W4042
.33 tw

DC W4400
.15 tw

DM 4419
JS .48 tw

DM 4434
JS .39 pc

DM 4400
JSN .12 tw

DC W4419
.64 tw

DC W4434
.52 pc

DM 4431
JSN .06 tw

DM 4385
JS .30 tw

DM 4388
JSNTW .12 tw

DC W4431
.10 tw

DC W4385
.40 tw

DC W4388
.20 tw

DM 4163
JSN .17 tw

DM 4392
JS .18 tw

DM 4438
JSN .34 tw

DC W4163
.25 tw

DC W4392
.24 tw

DM 4151
JSN .12 tw

DM 4391
JSN .09 tw

DC W4151
.18 tw

DC W4438
.21 tw

DC W4391
.135 tw



*D*ROP-IN WEDDING RINGS



DC W2270
1.00 tw



DC W2270
1.00 tw
BL 2985 JTB



DC W2218
.40 tw



NS W2297



DC W2218/DR
6 rubies .20 tw



DC W2190
.18 tw



DC W2218/DE
6 ems .20 tw



DC JW4042
.48 tw



DC JW4039
.20 tw



DC W2218/DS
6 saphs .20 tw



DC JW4018
1.22 tw



DC JW4037
.02 tw



DC JW4019
.64 tw



DC W2305
.06 tw



DC W2148
.90 tw



NS JW4050



DC W2185
.68 tw



DC W2197
.265 tw



DC W2150 .38 tw
DM 4424 .08 tw



DC W2115
.26 tw



DC W2116
.38 tw



DC W2196
.19 tw

W

RAP-AROUND & CHANNEL-SET DIAMOND WEDDING RINGS



DC W2042
.10 tw



DC W2032
.13 tw



DC W2307
.24 tw



DC W2027
.16 tw



DC W2261
.165 tw



DC W2299
.18 tw



DC W4420
.77 tw



DC W2259
.145 tw



DC W4419
.64 tw



DC W2260
.135 tw



DC W4385
.40 tw



DC W2262
.07 tw



DC W2263
.50 tw



DC W4392
.24 tw



DC W4365
.20 tw



DC W4391
.135 tw



DC W4163
.25 tw



DC W4427
1.52 pc



DC W4042
.33 tw



DC W4151
.18 tw



DC W4407
.80 pc



DC W4434
.52 pc

DC = Diamond Complete, item priced complete with diamond, colored stones or pearls
DM = Diamond mounting
NS = No stones, alterations can be made but original design has no provision for stones



DIAMOND WEDDING RINGS



DC W1499
.205 tw



DC W2117
.08 tw



DC W2054
.12 tw



DC W1534
.12 tw



DC W2056
.12 tw



DC W2248
.21 tw



DC W2306
.80 p.c.



DC W2310
.21 tw



DC W2268
.25 tw



DC W2287
.21 tw



DC W2269
.50 tw



DC W2288
.30 tw



DC W2285
.25 tw



DC W2289
.48 tw



DC W2302
.25 tw



DC W2282
.45 tw



DC W2191
.14 tw



BL W2267



DC W2290
.21 tw



DC W2291
.30 tw



DC W2286
1.50 tw



DC W2127
.97 tw



DC W1914
1.00 tw



DC W2265
.72 tw



DC W1913
.75 tw



DC W1912
.50 tw



DC JW4053
.27 tw



DC W3965
.30 tw



DC W1879
2.06 tw



DC JW4044
.75 tw



DC W1878
1.56 tw



DC W1966
3.12 tw



DC W1868
1.06 tw



DC W1965
2.37 tw



DC W2294
1.16 tw sb pc



DC W1964
1.62 tw



DC JW4047
.30 tw



DC W2295
.975 p.c.



DC JW4030
.525 tw mq



DC JW4045
.55 tw mq sb



DC JW4032
.82 tw sb trill



DC W2293
.75 sb

Diamond WEDDING RINGS

(continued)



DC W2278R/D
five 2 mm rubies
.12 tw



DC W2278/SD
five 2 mm sapphires
.12 tw



DC W2245/SD
three 3 mm sapphires
.20 tw



DC W2278/ED
five 2 mm emeralds
.12 tw



DC W2279/RD
five 2.3 mm rubies
.20 tw



DC W2279/SD
five 2.3 mm sapphires
.20 tw



DC W2245/RD
three 3 mm rubies
.20 tw



DC W2279/ED
five 2.3 mm emeralds
.20 tw



DS W2280/DR
three rubies
.10 tw



DC W2283/SD
five sapphires
.40 tw pc



DC W2280/DS
three sapphires
.10 tw



DC W2292/DR
three rubies
.10 tw



DC W2280/DE
three emeralds
.10 tw



DC W2292/DS
three sapphires
.10 tw



DC W2241/SD
eight 2 mm sapphires
.245 tw



DC W2292/DE
three emeralds
.10 tw



DS JW4006/RD
four 2 mm rubies
.12 tw



DC W2241/RD
eight 2 mm rubies
.245 tw



DC JW4006/SD
four 2 mm sapphires
.12 tw



DC JW4006/ED
four 2 mm emeralds
.12 tw



DC JW4027
1.00 tw



DC JW4026
.75 tw



DC JW4016
1.00 tw



DC JW4025
.50 tw



DC JW4015
.75 tw




DC JW4024
.35 tw



DC JW4014
.50 tw



DC JW4021
.50 tw pc



DC JW4020
.60 tw pc



DC JW4013
.25 tw



DC JW4022
.95 tw pc



DC JW4012
.20 tw



DC JW4011
1.00 tw



DC JW4007
.65 tw



DC JW4010
.75 tw



DE JW4008
.60 tw



DC JW4009
.50 tw



DC JW4048
.045 tw



DC JW4034
.78 tw



DC JW4049
.055 tw

JW = Jabel II Wedding Ring

*S*CULPTURED WEDDING RINGS



NS CW2165



NS CW2167



NS CW2088



NS CW2161



DC CW939/.30
.30 tw



NS CW2049



NS CW2089



NS CW943



NS CW2156



NS CW939



NS CW943



NS CW1438



DC CW934/.18
.18 tw



DC CW937/.08
.08 tw



NS CW934



NS CW965



NS CW937



NS CW2052





NS SW1220



NS SW1205



NS CW2090



NS CW2147



NS JW4054



NS CW2159



NS JW4056



NS SW2237



NS JW4055



NS SW2215



NS CW2301



NS SW1948



NS CW2112



NS SW2298



NS CW2256



NS JW4040



NS JW4043

CW = Carved Wedding Rings

THE LOVE CIRCLES

DC AW1005
.56 tw



DC AW1002
1.04 tw



DC AW1004
.45 tw



NS SW1747

DC AW1003
.30 tw



DC AW1001
.90 tw



DC AW1000
.585 tw



NS SW1744



DC AW1004/1747
.45 tw

NS SW1990



DC AW1004/1744
.45 tw



NS SW1749



DC AW1004/1990
.45 tw

DC AW1006/1004
.90 tw



DC AW1008/1004
.90 tw



DC AW1004/1749
.45 tw



DC AW1001/1663
.90 tw



NS W2202



DC AW1007/1005
1.12 tw



DC AW1009/1004
.90 tw

NS SW1663



DC AW1004/1948
.45 tw



NS SW1664

NS SW1948



SEAMLESS WEDDING RINGS



NS SW1270
1.5 mm



NS SW1272
2 mm



NS SW1271
2.5 mm



NS SW1273
3 mm



NS SW1274
4 mm



NS SW1275
5 mm



NS SW1276
6 mm



NS SW1277
7 mm



NS SW1278
8 mm



NS SW1279
9 mm



NS SW1282
10 mm



NS SW1660
1.5 mm



NS SW1662
2 mm



NS SW1661
2.5 mm



NS SW1663
3 mm



NS SW1664
4 mm



NS SW1665
5 mm



NS SW1666
6 mm



NS SW1667
7 mm



NS SW1668
8 mm



NS SW1669
9 mm



NS SW1670
10 mm



NS SW2321
4 mm



NS SW2322
5 mm



NS SW2323
6 mm



NS SW1289/6
6 mm



NS SW1289/8
8 mm



NS SW1289/10
10 mm



SEAMLESS WEDDING RINGS



NS SW1947
1.5 mm



NS SW1325
2 mm



NS SW2220
3 mm



NS SW2221
4 mm



NS SW1326
5 mm



NS SW2222
6 mm



NS SW2223
7 mm



NS SW2224
8 mm



NS SW1932
1.8 mm



NS SW1134
4 mm



NS SW2164
1.8 mm



NS SW2019
1.8 mm



NS SW2028
1.8 mm



NS SW2063
1.8 mm



NS SW1980
2.1 mm



NS SW1981
3 mm



NS SW2001
4 mm



NS SW2000
5 mm



NS SW2129
6 mm



NS SW2030
8 mm

SEAMLESS WEDDING RINGS



NS SW1270
1.5 mm



NS SW1272
2 mm



NS SW1271
2.5 mm



NS SW1273
3 mm



NS SW1274
4 mm



NS SW1275
5 mm



NS SW1276
6 mm



NS SW1277
7 mm



NS SW1278
8 mm



NS SW1279
9 mm



NS SW1282
10 mm



NS SW1660
1.5 mm



NS SW1662
2 mm



NS SW1661
2.5 mm



NS SW1663
3 mm



NS SW1664
4 mm



NS SW1665
5 mm



NS SW1666
6 mm



NS SW1667
7 mm



NS SW1668
8 mm



NS SW1669
9 mm



NS SW1670
10 mm



NS SW2321
4 mm



NS SW2322
5 mm



NS SW2323
6 mm



NS SW1289/6
6 mm



NS SW1289/8
8 mm



NS SW1289/10
10 mm



SEAMLESS WEDDING RINGS



NS SW1947
1.5 mm



NS SW1325
2 mm



NS SW2220
3 mm



NS SW2221
4 mm



NS SW1326
5 mm



NS SW2222
6 mm



NS SW2223
7 mm



NS SW2224
8 mm



NS SW1932
1.8 mm



NS SW1134
4 mm



NS SW2164
1.8 mm



NS SW2019
1.8 mm



NS SW2028
1.8 mm



NS SW2063
1.8 mm



NS SW1980
2.1 mm



NS SW1981
3 mm



NS SW2001
4 mm



NS SW2000
5 mm



NS SW2129
6 mm



NS SW2030
8 mm



NS SW2202
2 mm

NS SW2201
2.5 mm

NS SW2203
3 mm

NS SW2204
4 mm

NS SW2205
5 mm

NS SW2206
6 mm



NS SW2207
7 mm

NS SW2208
8 mm

NS SW2209
9 mm

NS SW2210
10 mm



NS SW1115
2 mm

NS SW1114
4 mm

NS SW1390
5 mm

NS SW4340
1.8 mm

NS SW2192
5 mm



NS SW2272
6.5 mm

NS SW2273
7.5 mm

NS SW2274
5 mm

NS SW2275
5.5 mm

NS SW2276
6 mm

NS SW2277
7 mm



NS SW2120
4 mm

NS SW2107
5 mm

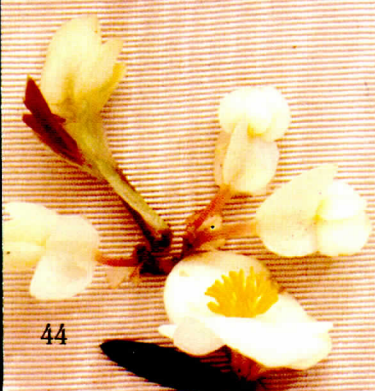
NS SW2101
8 mm



FANCY RINGS

- A - DC F1214 .75 tw
- B - DC JF3007/RD 7-2.8 mm rub .30 tw
- C - DC JF3007/ED 7-2.8 mm em .30 tw
- D - DC JF3007/SD 7-2.8 mm saph .30 tw
- E - DC JF3016 .465 tw
- F - DC JF3017 .72 tw
- G - DC JW4041 .70 tw
- H - DC F1233 1.70 tw
- I - DM F1029 JM .06 tw
- J - DM JF3009 EM .30 tw

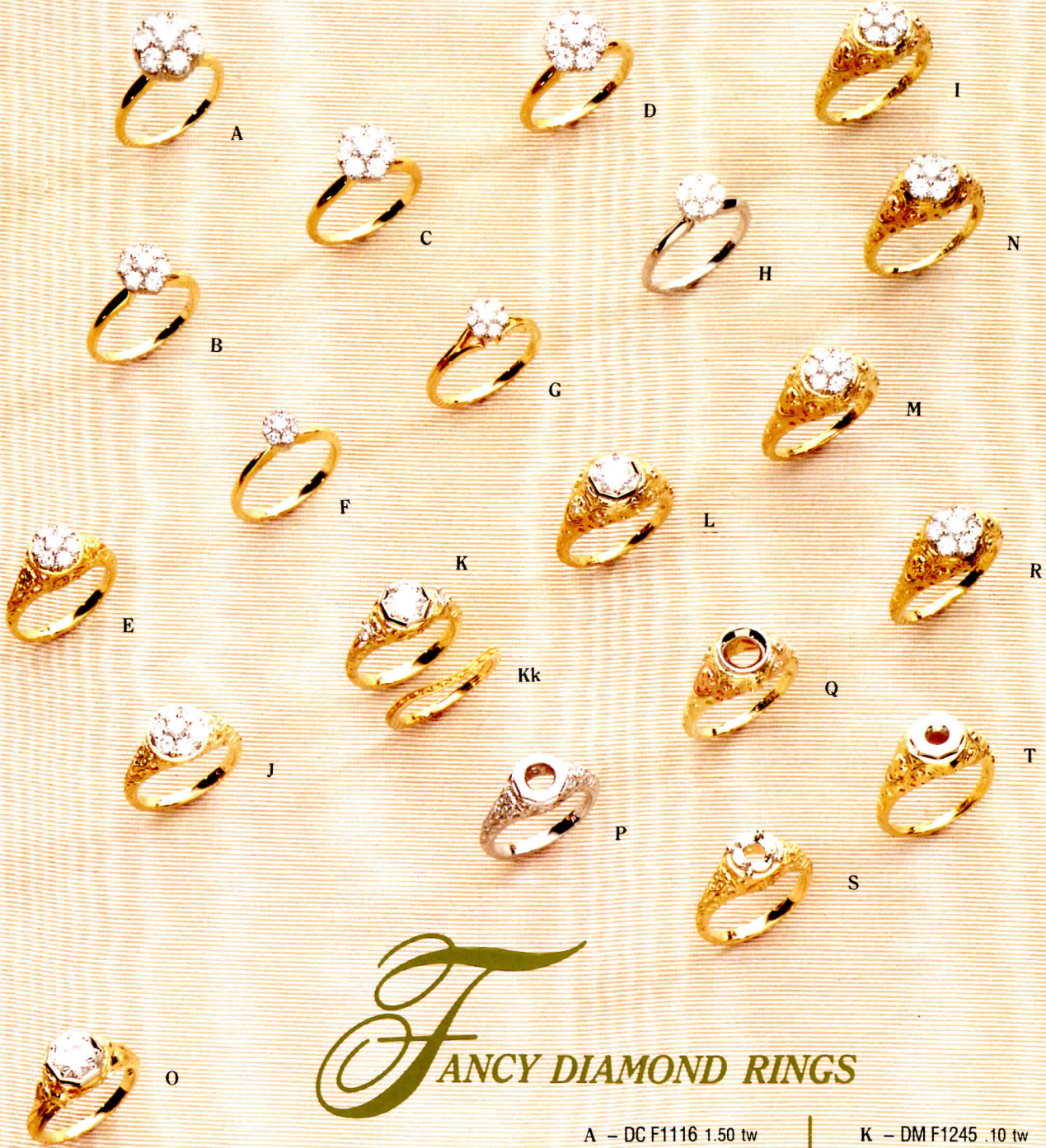
- K - DC JW4053 .27 tw
- L - DC JF3012DS 6 sq. saph .42 tw
- M - DC JW4044 .75 tw
- N - DM JF3005 1.70 tb
- O - DM JF3006 JSD .80 tw
- P - DC JF3013 .88 pc
- Q - DC JW4051/DR 8 sq. rubies .40 tw
- R - DC JW4031 .65 tw
- S - DC F1241 GIL 10x5 mq gil em .265 tw
- T - DC JW4028 1.35 tw





A - DM F1239 JS .62 tw
 B - DM F1080/DR JTJ 8-2.4 mm saph.40 tw
 C - DM F1080 JTJ .80 tw
 D - DM F1080/DE JTJ 8-2.4 mm em .40 tw
 E - DM F1240 JS .68 tw
 F - DM F996 JTJ .40 tw
 G - DM F1238 8x4 mm mq. .80 tw
 H - DM F997 JTJ .40 tw
 I - DC F1231 1.03 tw
 J - DC F1227 .93 tw
 K - DC F1230 1.66 tw
 L - DC F1234 1.07 tw

M - DC F1232 2.10 tw
 N - DM JF3020 tb .64 tw
 O - DC F1242/DR 7 rubies .60 tw
 P - DM F1215 JTJ .39 tw
 Q - DC JF3026 .50 tw
 R - DM F1068 JTO .23 tw
 S - DC FW1068 .13 tw
 T - DM F1014 JTO .39 tw
 U - DC FW1014 .22 tw
 V - DM F1198 JM .36 tw
 W - DM F1213 JTJ .80 tw



FANCY DIAMOND RINGS

- | | |
|----------------------|---------------------|
| A - DC F1116 1.50 tw | K - DM F1245 .10 tw |
| B - DC F1093 .75 tw | Kk- NS SW2216 |
| C - DC F1112 1.00 tw | L - DM F1246 .11 tw |
| D - DC F1092 1.30 tw | M - DC F1137 .50 tw |
| E - DC F1125 .50 tw | N - DC F1135 .75 tw |
| F - DC F1110 .25 tw | O - BL F1249 |
| G - DC F1243 .33 tw | P - BL F1124 |
| H - DC F1105 .50 tw | Q - BL F1247 |
| I - DC F1136 .50 tw | R - DC F1134 .75 tw |
| J - DC F1126 .75 tw | S - BL F1124 JRC |
| | T - BL F1248 |





A



C



B



G



L



F



K



E



P



D



J



O



I



N



R



H



M



Q

FANCY DIAMOND RINGS

- A - DC F1175 .10 tw
- B - DM F875 JM .06 tw
- C - DM F1235 JM .18 tw
- D - DC JF3018 1.11 tw
- E - DC JW4033 .04 tw
- F - DM F1250 JM .14 tw
- G - DM F1204 JM .18 tw
- H - DC JF3019 .60 tw
- I - DC JW4046 .225 tw
- J - DM F1165 .04 tw

- K - DC JF3021 DS .33 tw
- L - DM JF3025 .08 tw
- M - DM JF3015 MJTB .52 tw sb pc
- N - DM JF3010 FP .21 tw
- O - DC JF3022 .50 tw
- P - DM JF3023 JTA .09 tw
- Q - DM F1206 MJSD .06 tw
- R - DM JF3024 JTA .08 tw
- S - DC JF3014 .45 tw



S



COLORLED STONE RINGS AND JEWELRY

- A - DM CRP113 10x8 mm .30 tw
- B - DM CRP122 9x7 mm .36 tw
- C - DM CRE120 7x5 mm .60 tw
- D - DM CRE121 8x6 mm .72 tw
- E - DM CRE116 8x6 mm .48 tw
- F - DC F1217/DS 5 mm saph .28 tw
- G - DM CR114 7x5 mm .30 tw
- H - DM CR104 8x6 mm .24 tw
- I - DM CR105 10x8 mm .30 tw
- J - DM CR114 7x5 mm .30 tw
- K - DM CR112 10x8 mm .20 tw
- L - DM CR105 10x8 mm .30 tw
- M - DM F1224 5 mm .125 tw
- N - DM CR104 8x6 mm .24 tw
- O - DM CR112 10x8 mm .20 tw
- P - DM CR106 12x10 mm .36 tw
- Q - DM CR115 8x6 mm .36 tw
- R - DM CR118 6x4 mm .15 tw
- S - DM CR119 7x5 mm .18 tw
- T - DC F1219/DE 10-2 mm em .75 tw

MEN'S RINGS

A - BL G165
 B - DM G231 .20 tw
 C - DM G233 .40 tw
 D - BL G176
 E - BL G242
 F - BL G237
 G - DM G200 .20 tw
 H - DM G240 .25 tw
 I - BL G177
 J - BL G146

K - DC G216 .25 tw
 L - BL G183
 M - DC G243 .46 tw
 N - BL G207
 O - BL G239
 P - DM G234 .24 tw
 Q - BL G244
 R - BL G241
 S - BL G230
 T - BL G238

REMOUNT AND SPECIAL ORDER

The Remount and Special Order section of your catalog illustrates Jabel Incorporated's greatest strength: the ability to display diamonds and other precious gems to their best advantage in fine jewelry. It is this ability, in the design and manufacture of parts, and the highly developed skills of its artisans, that make Jabel pieces outstanding in any collection of the finest diamond jewelry.

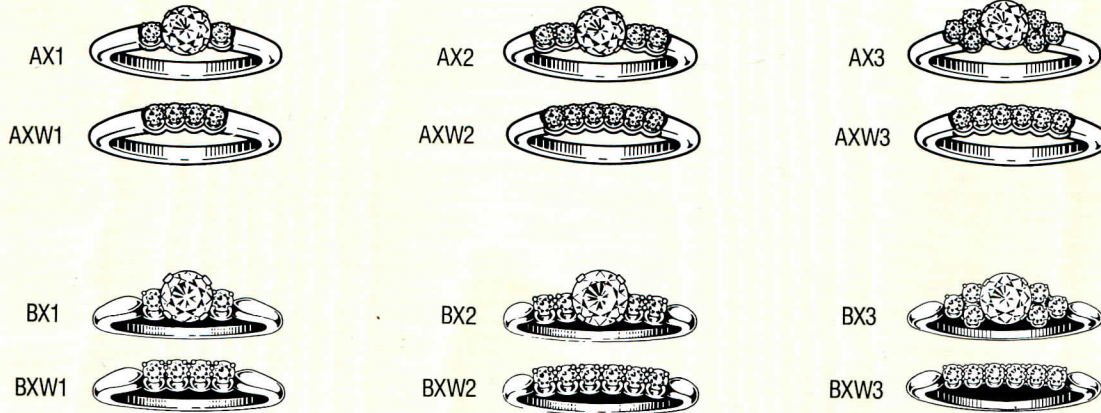
"LIGHT" is the secret of the beauty in diamonds and precious gems. The allowance of maximum light reflection in even a mediocre stone will give it a brilliance that it could not otherwise show. Since the founding of the company in 1916, it has been the particular genius of Jabel designers, tool-makers and setters to provide that light. Over and over again, less-than-perfect diamonds are removed from old jewelry and placed in settings created for their individual shape and size. Polished to a mirror-bright finish before they are assembled, settings from tiny one-pointers to imposing mountings of three and four carats and more, will catch and magnify the dimmest ray of light. The result? New life for old gems and the knowledge that they are displayed as safely and as beautifully as possible.

Nowhere is this more evident than in Remount and Special Order. The blank mountings you will see on the following pages are only the tip of the iceberg. These are suggested arrangements. The variations are limitless. Blank mountings are available for heirloom gems or new stones. New designs can be created for almost any combination of gems. A rendering will be submitted for approval and, if requested, returned to you when the job is complete.

No fine jeweler can be without Special Order capability. It is the surest sign of the true professional.

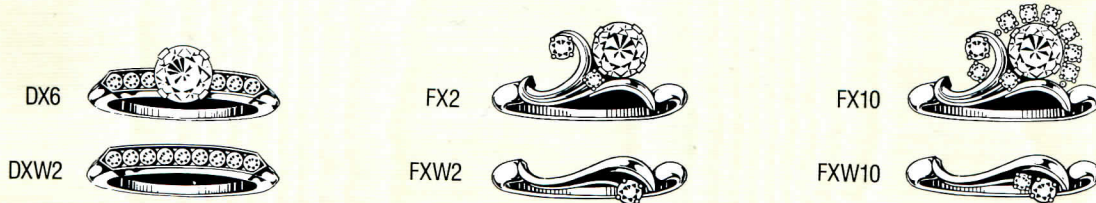


REMOUNT ENGAGEMENT AND MATCHING WEDDING RING BLANKS



Ensemble sets above are available for melee from .01 ct. through .10 ct. of uniform diameter.

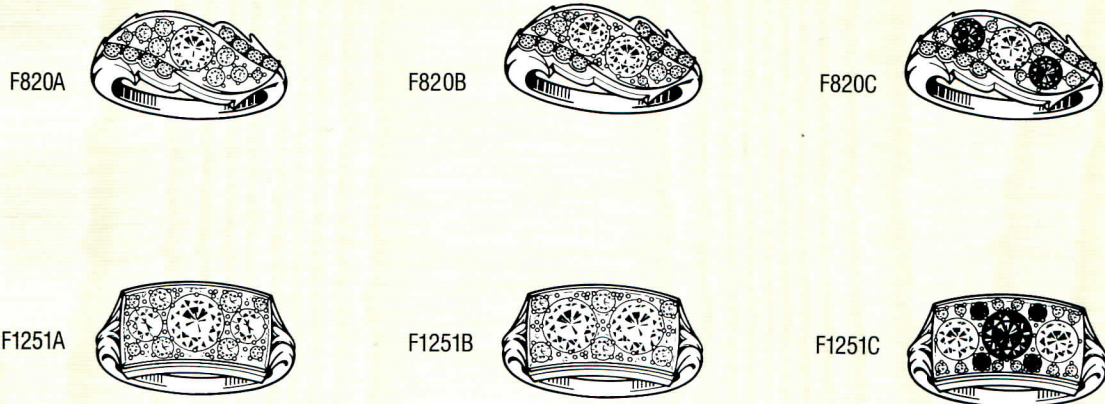
Ensemble sets above available for melee from .01 ct. through .06 ct. of uniform diameter.



Ensemble set DX6-DXW6 available for melee from .01 ct. through .04 ct. of uniform diameter. Engagement ring can accommodate four to six melee; matching wedding ring, seven to nine melee.

FX series can accommodate a major diamond from 1/8 ct. through 1 ct. and melee from .01 ct. to .05 ct. They do not have to be uniform in size.

Fancy ring remount series "Kelly Specials". So called in honor of Jabel's Kelly Schaefer who promoted and sold this concept.



The plate that forms the top of these rings can be drilled in almost any configuration providing that no stone exceeds 1/2 ct., 5mm in diameter and 3mm in depth.

REMOUNT ENGAGEMENT AND MATCHING WEDDING RING BLANKS

Ensemble Sets below available for Melee from
.03 through .25 of uniform diameter



Ensemble Sets below available for Melee from
.03 through .25 of uniform diameter



Ensemble Sets below available for Melee from
.03 through .10 of uniform diameter



DBX Ensemble Sets available for Melee from .07 through .25 of uniform diameter.

FANCY RING REMOUNT SERIES GX and HX

GX series can accommodate one or two major diamonds from $\frac{1}{8}$ ct. to $1\frac{1}{2}$ ct. If three major diamonds are involved then the maximum sizes are 1 ct. each. Melee can be from .01 ct. through .10 ct. They do not have to be uniform in size.



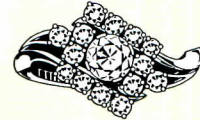
GX0



GX1



GX3



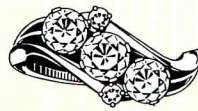
GX7



GX11



GX15



GX17

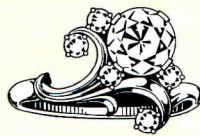


GX20

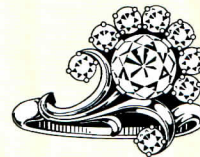
HX series can accommodate major diamonds from $\frac{1}{8}$ ct. to $1\frac{1}{2}$ ct. and melee from .01 ct. to .10 ct. which do not have to be uniform in size.



HX0



HX4



HX7



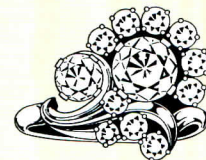
HX13



HX14



HX19



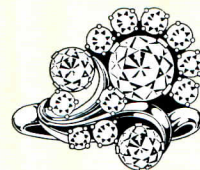
HX23



HX24



HX27



HX34

FANCY RING REMOUNT SERIES JX, KX, LX

Series JX can accommodate one or two major diamonds. If one major is used, stones of up to 1½ cts. can be accommodated. If two majors are used, each can weigh up to ¾ ct. Melee can weigh from .02 ct. to .10 ct. They need not be uniform in size.



JX2



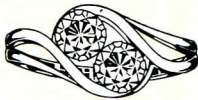
JX4



JX7



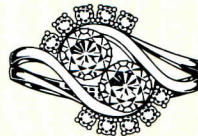
JX10



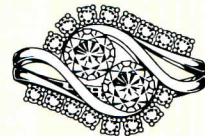
JX11



JX14



JX16



JX19

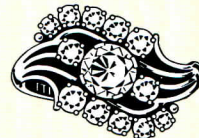
KX series can accommodate one major diamond up to 1½ ct.; two major diamonds up to 1 ct. each and three major diamonds up to ¾ ct. each. This series can accommodate melee from .01 ct. to .10 ct. They do not have to be uniform in size.



KX1



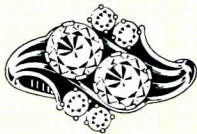
KX3



KX6



KX9



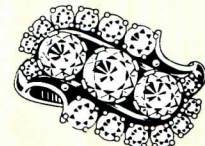
KX12



KX16



KX20



KX25

LX series can accommodate one or two major diamonds from ⅛ ct. to 1½ ct. If three major diamonds are involved, then the center stone can be up to 1½ ct. and each side major diamond up to ⅝ ct. This series can accommodate melee from .01 ct. to .10 ct. They do not have to be uniform in size.



LX1



LX4



LX6



LX10



LX15



LX18



LX20



LX25

FANCY RING REMOUNT SERIES NX, OX, QX

NX series can accommodate one or two major diamonds from $\frac{1}{8}$ ct. to $1\frac{1}{2}$ ct. If three major diamonds are involved, then the center stone can be up to $1\frac{1}{2}$ ct. and each side major diamond up to $\frac{5}{8}$ ct. This series can accommodate melee from .01 to .10 ct. They do not have to be uniform in size.



NX1



NX3



NX6



NX10



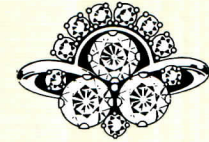
NX13



NX17



NX23



NX30

Series OX can accommodate one or two major diamonds. If one major is used, stones of up to $1\frac{1}{2}$ cts can be accommodated. If two majors are used, each can weigh up to $\frac{3}{4}$ ct. Melee can weigh from .02 ct. to .15 ct. They need not be uniform in size.



OX1



OX4



OX6



OX11



OX12



OX14



OX21

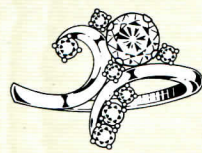


OX22

OX series can accommodate major diamonds from $\frac{1}{8}$ ct. to 2 ct. and melee from .01 ct. to .10 ct. which do not have to be uniform in size.



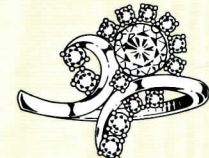
QX3



QX8



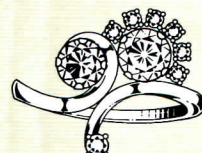
QX9



QX14



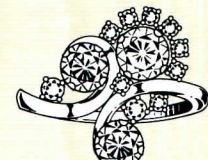
QX15



QX21



QX25



QX35

FANCY RING REMOUNT SERIES TX, UX, YX

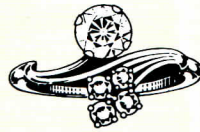
TX series can accommodate one or two major diamonds from $\frac{1}{8}$ ct. to $1\frac{1}{2}$ ct. Melee can be from .01 through .10 ct. They do not have to be uniform in size.



TX2



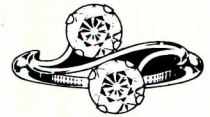
TX3



TX4



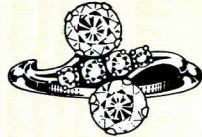
TX8



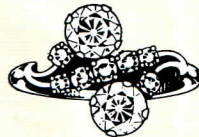
TX11



TX14



TX15



TX18



TX19



TX22

UX series can accommodate one major diamond up to $1\frac{1}{2}$ ct. Two major diamonds, center major diamond up to $\frac{3}{4}$ ct. and second major diamond up to $\frac{5}{8}$ ct. Three major diamonds; center major diamond up to $\frac{3}{4}$ ct., second major diamond up to $\frac{5}{8}$ ct. and third major diamond up to $\frac{3}{8}$ ct. This series can accommodate melee from .01 ct. to .10 ct.



UX0



UX3



UX5



UX8



UX11



UX18



UX22



UX27

YX series can accommodate one major diamond up to $\frac{3}{4}$ ct. Two major diamonds, center major diamond up to $\frac{3}{4}$ ct. and second major diamond up to $\frac{1}{2}$ ct. Three major diamonds; center major diamond up to $\frac{3}{4}$ ct., second major diamond up to $\frac{1}{2}$ ct., and third major diamond up to $\frac{1}{4}$ ct. This series can accommodate melee from .01 ct to .10 ct.



YX0



YX2



YX7



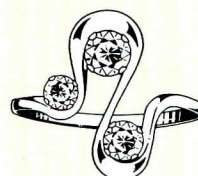
YX12



YX15



YX20



YX25

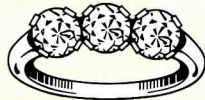


YX (Special)

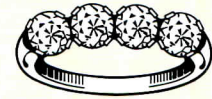
TWO AND THREE STONE RINGS



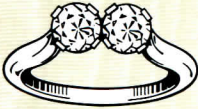
T494/2



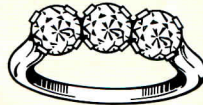
T494/3



T494/4



T365/2



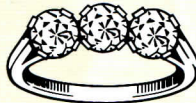
T365/3



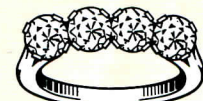
T365/4



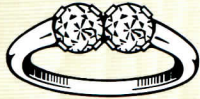
T553/2



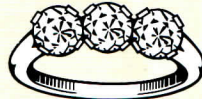
T553/3



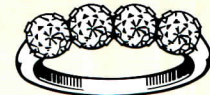
T553/4



T554/2



T554/3



T554/4



T509



T512/3



T410



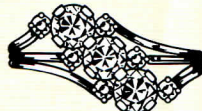
T549
.12 tw



T496



T516
.12 tw



T517
.18 tw



T513
.20 tw



T557
.15 tw



T539
.24 tw

PENDANTS & BROOCHES FOR REMOUNT



PX1



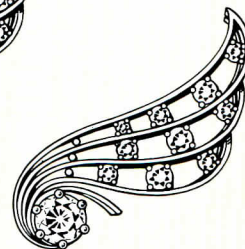
PX7



BRX2



BRX9



BRX19



PHX2



PHX11



PX4



PX10



SX2



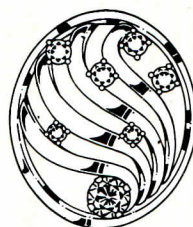
SX4A



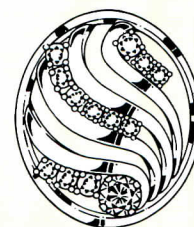
PHX12



PHX10



SX6B



SX12A

BRX series can accommodate stones from .08 cts. to 1½ cts.

PX series can accommodate one major diamond from ⅛ to 2 ct.

Melee can be from .01 ct. through .10 ct.
They do not have to be uniform in size.

PHX series can accommodate major diamonds from ⅛ ct. to 1½ ct.
and melee from .01 ct. to .10 ct. They do not have to be uniform in size.

SX series can accommodate one major diamond from ⅛ ct. to ⅝ ct.
and a second major diamond from ⅛ ct. to ½ ct.
Melee can be from .01 ct. through .10 ct.

I *NFORMATION AND* *E* *XPLANATIONS*

JABEL INCORPORATED includes three separate lines:

1. Jabel
2. Jabel II
3. Jacor

Although there is overlapping, each line has its own niche and identity.

1. Jabel—a line of 18K gold and diamond rings and jewelry. Constructed mainly by the Die-striking method (please see introduction to "Rings") the Jabel product covers all categories. This is the finest mass-produced line in the industry.

2. Jabel II—is an 18K gold and diamond line of cast jewelry, primarily engagement ensembles, diamond wedding rings and fancy rings. In many instances, heads are die-struck. This line has tripled its volume in the few years of its existence and will soon offer a broad choice of jewelry items.

3. Jacor—is a cast line of exciting colored-stone rings, bracelets and gold jewelry. Primarily 14K, 18K is available on request. Special needs in colored stones—type, cut and size—can be accommodated. Of-the-moment in styling, Jacor has added a new dimension to Jabel Incorporated.

1. With the exception of our 10% iridium platinum, most of the metal alloying is done in-factory. 18K white gold, 18K yellow gold, 14K yellow gold and platinum are available.

2. 18K white gold heads are alloyed with palladium.

3. Melee and major diamonds in yellow gold rings or jewelry are mounted in 18K white gold settings unless otherwise specified. "ALL YELLOW" indicates melee *only* are to be set in yellow gold. Major stones in yellow gold must be *specifically* requested. (see 3b, pg. 69)

4. Platinum prices are available upon request.

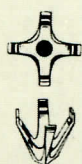
METHODS OF MANUFACTURE

1. **Die-Striking.** Precious metals are formed into findings (jewelry parts, shanks, tops, settings, etc.) by placing pieces cut from forged and rolled ingots of the desired metal on a series of steel blocks, called *dies*, into which the required shape has been carved. Forces up to 230 tons are applied to push the metal into every crevice of the sunken image. This repeated pressure results in malleable metals, receptive to a high polish.

2. **Casting.** The process of shaping metal objects by pouring molten metal into a hollow mold which has been made from a model of the desired article.

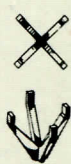
3. **Handcrafting.** In Special Order work or one-of-a-kind designs, when an unusual finding is required, the piece is fashioned by hand.

THE JABEL HEADS



JS-JSTW

¼ to 2¼ ct.
3.9 to 8.5 mm



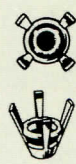
JSN

⅓ to 2¼ ct.
3.9 to 8.5 mm



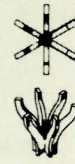
JSNTW

⅓ to 2¼ ct.
3.9 to 8.5 mm



JM

¼ to 3½ ct.
4 to 9.5 mm



JTB

¼ to 2 ct.
4 to 8 mm



JTO

⅓ to 2¼ ct.
3.9 to 8.5 mm



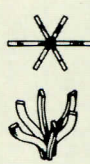
NRF

⅓ to 1¼ ct.
2.8 to 7 mm



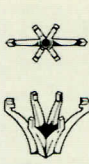
OJSD

⅓ to 1½ ct.



MJTB

¼ to 2 ct.



**MJTB
V end**

¼ to 2 ct.



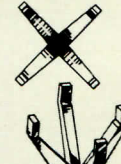
JSS

.07 to .15 ct.
2.7 to 3.5 mm



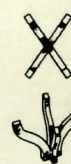
JS

¼ to 2¼ ct.
4 to 8.5 mm



JLS

2½ to 3½ ct.
9 to 10 mm



EJS

¼ to 2 ct.

JABEL SERVICES

1. **Remount and Special Order.** All "X" styles and "T" numbers are available as blanks for your customers' heirloom stones and stones from your own inventory. Jewelry from other categories may be utilized for your customers' stones. *Our artists can supply renderings of suggested designs for your approval. You may request the return of a rendering for your customer only after the order is approved and completed.*

2. **Our Stone Buyers' sources** make it possible for you to offer extraordinary gems to your customers.

3. **Advertising and Promotional Materials** are available in the form of brochures, counter cards and booklets. **FACETS...of JABEL**, a newsletter, keeps you up-to-date on new numbers and events.

4. **Your Sales Representative** will conduct seminars for *your* sales staff, building confidence with product knowledge. The presence of the representative during your special event is a priceless addition.

FACTS TO REMEMBER

1. All rings are illustrated 10% over actual size. Jewelry is illustrated actual size.

2. Major diamonds shown in rings and jewelry in this book are for show only and are NOT included in the price unless noted. The colored stones shown in Jacor products are included in the price.

3. Jabel lines are extremely flexible. Alterations can be made using parts from almost all categories.

THE PRICE BOOK

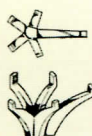
1. All prices are shown in the Price Book only.
2. Prices are listed by category in numerical order.
3. Items shown in the Catalog are indicated by asterisk (*).
4. The Price Book is up-dated as necessary. Prices may change without notice.
5. Please store your Price Book in the pocket on the inside of the back cover of your Catalog.

IDENTIFICATION

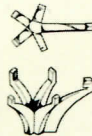
1. **Abbreviations**
 - a. mm= millimeter and refers to measurements of colored stones
 - b. tw= refers to total weight of diamonds only
 - c. pc=princess cut
 - d. ps=pear shape
 - e. mq=marquise
 - f. sb= straight baguette
 - g. tb= tapered baguette
 - h. trill= trillion



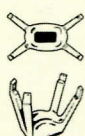
PJSD
3 Prong
1/8 to 3/8 ct.
5 to 6 mm



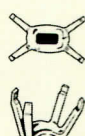
PJSD
5 Prong
1/4 to 2 ct.
5.5 to 10.5 mm



PJSD
5 Prong V end
1/4 to 2 ct.
5.5 to 10.5 mm



EJS
1/4 to 2 ct.



OJS
1/4 to 2 ct.



JTJ
1/4 to 2 ct.
2.4 to 9 mm



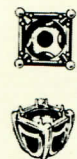
JLT
2 1/4 to 5 ct.
8.5 to 10 mm



JTS
.07 to .15 ct.
2.7 to 3.5 mm



JSD-JSDTW
1/4 to 2 ct.
4 to 8 mm



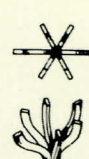
JRF
1/8 to 1 1/4 ct.
3.2 to 7 mm



JL
1/8 to 1 1/4 ct.
3.2 to 7 mm



KT
1/8 to 3/4 ct.
3.5 to 6 mm



OJTB
1/4 to 2 ct.



NRFTW
1/8 to 1 1/4 ct.
2.8 to 7 mm

2. **Prefixes** (These are part of the style number.)

- a. BL=blank—accommodations for stones, no stones provided
- b. NS=no stones—alterations can be made, but original design contains no provision for stones.
- c. DC=diamond complete—item priced complete with diamonds, colored stones or pearls.
- d. DM=diamond mounting

3. **Product Description**

- a. Style numbers all begin with a descriptive prefix, followed by a base style number, head style, carat size and metal. This is illustrated below:

Prefix	Base Style #	Head Style	Carat Size	Diamond Quality	Metal
DM	F997	JTJ	3/4ct	U6	18Y

b. **Metal designation** is vital to correct order filling. Please use the following designations:

- 14Y —14Y shank, melee and major in 18K white
- 14AY —14Y shank, melee in yellow, 18K white major head
- 14PG —two-tone, 14K pink and green gold
- 14YPL—14Y shank, platinum head
- 14AYH—14Y shank, all diamonds set in yellow
- 18Y —18Y shank, melee set in white, white major
- 18AY —18Y shank, melee set in yellow, white head
- 18YPL—18Y shank, platinum head
- 18AYH—18Y shank, melee in yellow, yellow major head
- PLAT —All parts in platinum
- 18W —All parts in 18K white gold

HOW TO ORDER:

To insure prompt service, please include the following information with your order. (Each item on the order must have its own particulars.)

- Account Number
- Prefix
- Base Style #
- Head Style
- Carat Size
- Diamond Quality
- Metal
- Desired Delivery Date
- Purchase Order #
- Finger Size

Name and Address of Your Firm!!