

JABEL

Ring Transformations



# JABEL

## Ring Transformations



THE purpose of this Portfolio is to make it easy for your customers to visualize the beautiful, new rings which they can have in place of the outmoded, old-fashioned pieces which they would like to modernize. With a minimum of effort you can now give to each of your customers a truly *individualized* ring. Each one of the designs illustrated in this Portfolio represents a *hand made* ring.

The cost of each mounting is clearly indicated, so that you can submit a complete estimate to your customer at once. This standardization of prices is a real advantage in cutting the sales resistance which takes place when there are delays.

Ascertain the design which appeals to your customer as well as the number and size of the stones to be set in the ring. Take one of the sheets from the pad on the inside back cover and outline roughly the positions of the stones. It is easy by this process to make any transformation.

As soon as your rough design is finished and approved by your customer, send it to us with the style number of the ring and the result will be a perfect ring transformation.



### SPECIAL SKETCHES

There may be cases where the number and size of the diamonds which a customer has necessitates a slight change in the size of the mounting or in the setting. Perhaps your customer can't visualize how it will come out when

such changes are involved. In these cases we will be glad to furnish an exact sketch of the finished design without charge. We offer this specialized ring design service in order to cooperate with you and speed up your sales.



**JABEL**  
RING MANUFACTURING COMPANY  
NEWARK, NEW JERSEY



# Ring Transformations



JS-245



JS-246



JS-247



JS-248



JS-249



JS-250



JS-251



JS-252



JS-253



JS-254



JS-255



JS-256



JS-266



JS-265



JS-264



JS-267



JS-268



JS-269



JS-257



JS-258



JS-259



JS-260



JS-261



JS-262



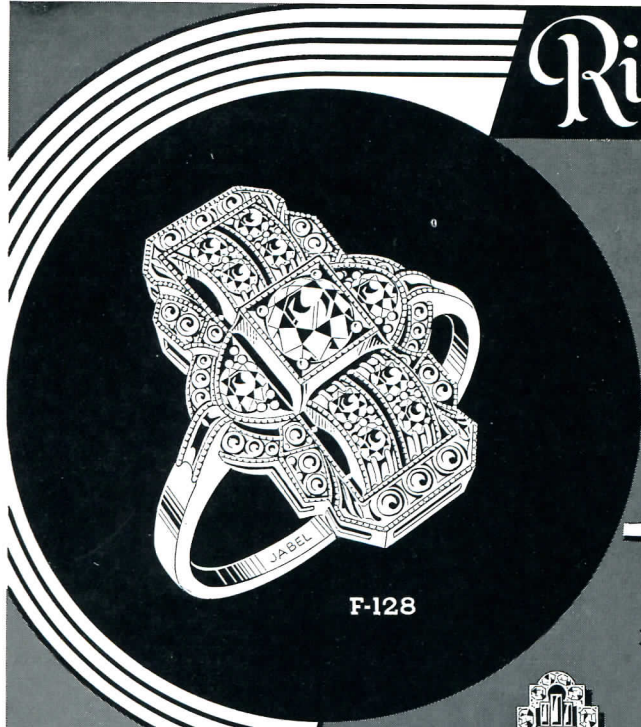
JS-263



5796



# Ring Transformations



F-128



JS-272



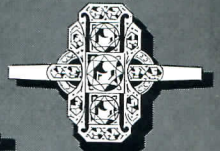
JS-273



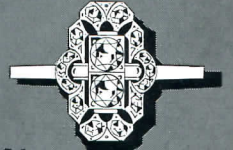
JS-274



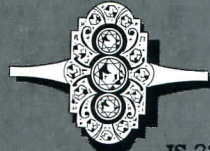
JS-293



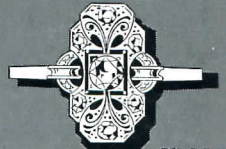
JS-292



JS-294



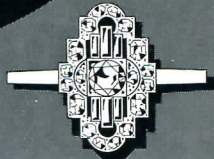
JS-286



JS-295



JS-270



JS-275



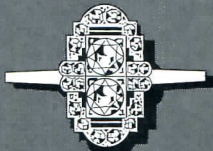
JS-287



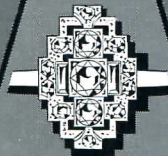
JS-296



JS-271



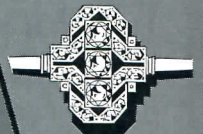
JS-276



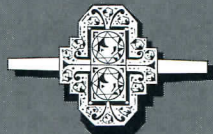
JS-280



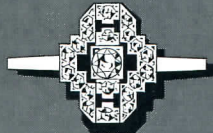
JS-288



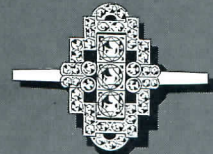
JS-297



JS-277



JS-281



JS-289



JS-278



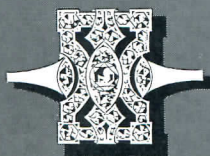
JS-282



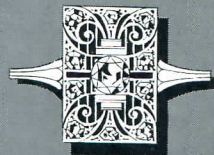
JS-283



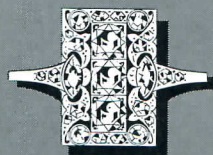
JS-290



JS-279



JS-284



JS-285

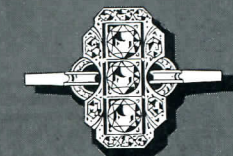


JS-291

"A" SERIES



# Ring Transformations



JS-298



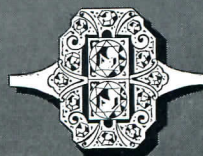
JS-299



JS-300



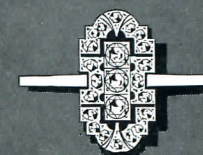
JS-301



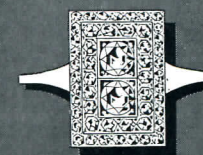
JS-302



JS-303



JS-304



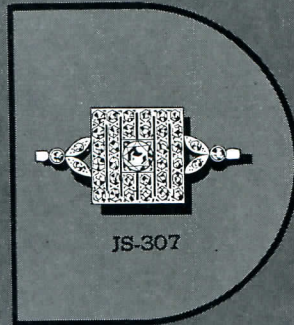
JS-305



JS-306



JS-311



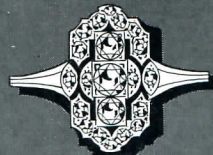
JS-307



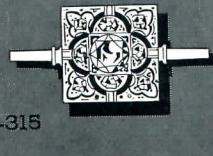
JS-312



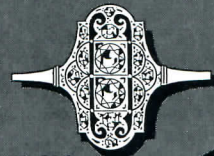
JS-313



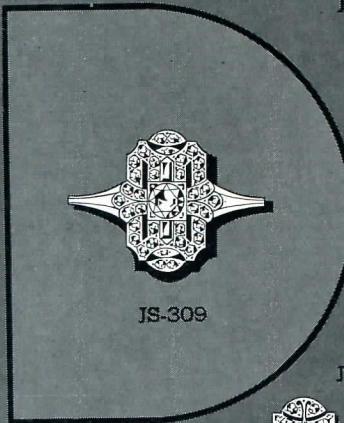
JS-314



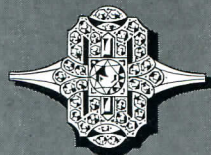
JS-315



JS-316



JS-308



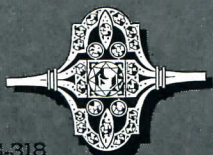
JS-309



JS-317



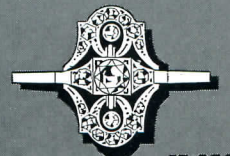
JS-310



JS-318



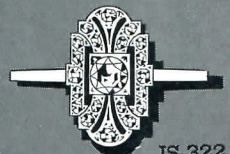
JS-319



JS-320



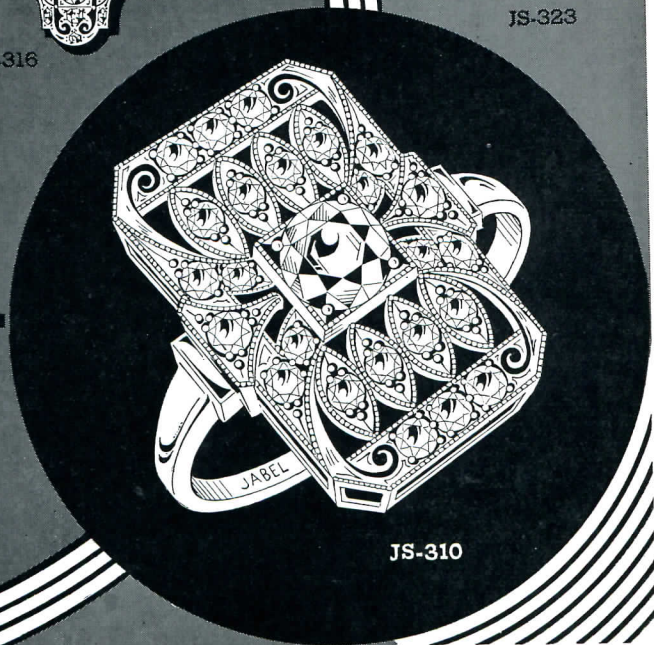
JS-321



JS-322



JS-323



JS-310



# Ring Transformations



JS-324



JS-325



JS-326



JS-327



JS-328



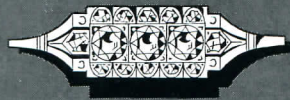
JS-329



JS-330



JS-331



JS-332



JS-333



JS-334



JS-335



JS-336



JS-337



JS-338



JS-339



JS-340



JS-341



JS-342



JS-343



JS-344



JS-347



JS-348



JS-349



JS-350



JS-345



JS-351



JS-346



JS-352



JS-353



# Ring Transformations



5768



5764



5789



2038



5725



5749



5724



5797



2138



3096



2066



2136



A-165



2036



2134



1932



A-205



5787



5727



A-195



2071



1999

2041



5702



2183



5812



2167



2033

"L" SERIES